



Welcome to the World of
E-Collar Technologies, Inc.

BP-504
Owner's Manual

**"Happiness is a Well-
Behaved Dog"**

Welcome to the World of E-Collar Technologies, Inc.



Barkless Pro BP-504

Congratulations on your recent purchase of the Barkless Pro BP-504 bark elimination collar. We have incorporated features designed to help reduce unwanted and excessive barking in a humane way.

The 5-second safety delay feature is designed to prevent sensitive dogs from experiencing multiple stimulations due to vocalizing immediately after a prior activation. Additionally, the sensitivity of the sensor can be adjusted to suit your dog's specific barking behavior.

Our products are carefully designed and manufactured to meet strict quality standards, ensuring a safe experience for your beloved pet.

This guide is designed to help you understand the fundamental functions, programming features, and contents of the BP-504. For additional information and support, please visit www.ecollar.com or reach out to us at customerservice@ecollar.com.

You may also contact our excellent customer service department at (260) 357-0051

TABLE OF CONTENTS

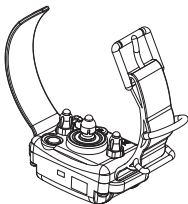
- Characteristics	03
- Components	04
- Getting Started	05
- Charging the Collar Unit	06
- Turning The Unit On/Off	07
- 5 Programming Modes	08
- LCD Display	09
- How to Program	10
- Bark Counter Mode	11
- Setting stimulation levels	12
- Changing Sensor Sensitivity	13
- Pavlovian Tone On/Off Mode	14
- Testing Your Barkless Collar	15
- How to Select the Correct Stimulation	16
- Indicator Light	17
- Correctly Fitting the Collar	18
- Understanding Contact Point Sensitivities	19-20
- How to Change the Contact Points	21
- Safety and General Information	22-23
- One Year Warranty	24
- Technical Specifications	25

CHARACTERISTICS

- 5 Second Safety Delay Between Stimulation Activations.
- 3 Stimulation Modes: Tone Only, 8 Levels of stimulation and Auto Mode.
- 3 Levels of Adjustable Bark Sensitivity.
- Ability to Turn Pavlovian Tone Off (Great for tone superstitious dogs).
- LED Light to Indicate Battery Status.
- 2 Hours Quick Charge Li-Po Battery.
- Adaptable to Various Size Dogs and Different Breeds.
- Advanced Vibration Sensor Technology eliminating false activations.
- Fully Waterproof and Shock Resistant.
- Constructed with Antibacterial Plastic.
- Short and Long (Low Nickel) Stainless Steel Contact Points.
- Proprietary ABST (Advanced Bark Suppression Technology).
- Bark Counter
- Sleep Mode (battery conservation)

COMPONENTS

- BP-504 Collar Unit with Collar Strap



- Owner's Manual



- Contact Point Removal Tool



- Lithium Polymer Charge Adaptor



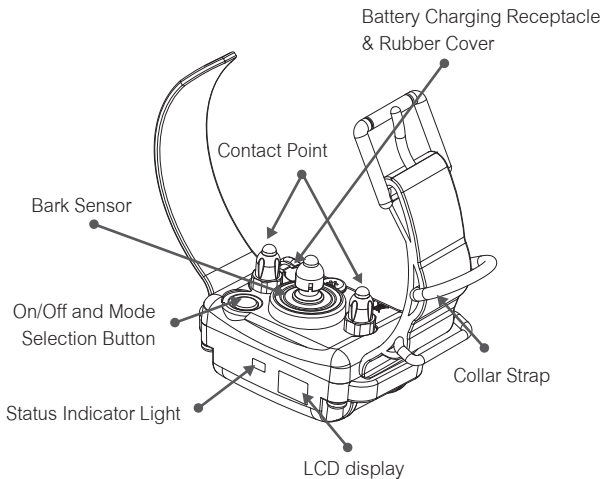
- Stainless Steel Contact Points



- Sensor Post for Long Contact Points



GETTING STARTED



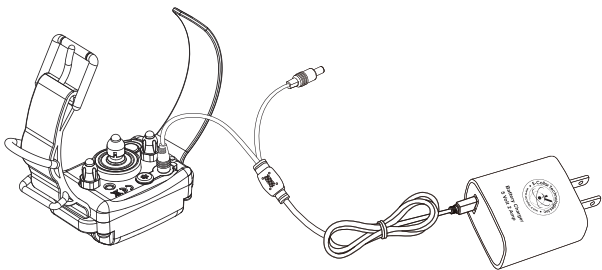
The BP-504 features a waterproof control button used to power the unit on/off, cycle through the five modes, and adjust the settings for each mode.

CHARGING THE COLLAR UNIT

Blinking Green = Normal Operation

Solid Red = Stimulation Active

Blinking Red = Recharging is Required.



Indicator light will turn solid red during charge cycles and will turn green once it is fully charged. (approximately 2 hours)

Your e-collar is equipped with Li-Polymer batteries that need specific attention to ensure their longevity. It is advisable to avoid fully discharging the battery. In the event of complete discharge, please recharge it promptly to prevent irreversible damage. Additionally, please keep the units away from excessive heat and cold temperatures.

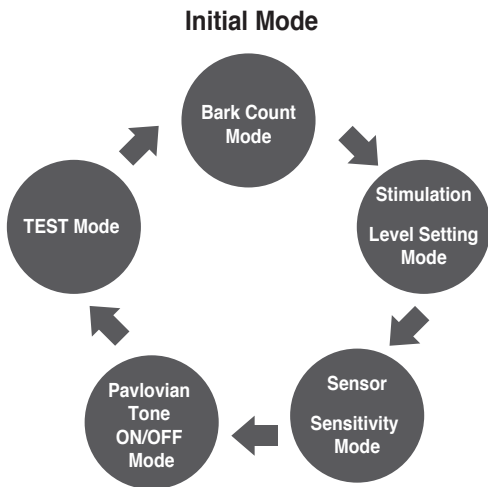
TURNING THE UNIT ON/OFF

To turn on the BP-504, simply press and hold the control button for 0.25 seconds, a tone will sound and the bark count mode will be displayed.

To turn the BP-504 off, simply press and hold the control button for 5 seconds, a tone will sound and the software version will be displayed.

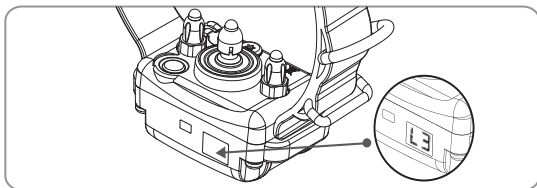
5 PROGRAMMING MODES

The BP-504 features 5 programming modes. The initial mode is the bark counter, pressing the control button will toggle through the modes as shown in the diagram below.



LCD DISPLAY

Mode	LCD Display	Mode
Count Mode	00-99	Number of Bark Activations
Stimulation Level Setting Mode	L 0	Tone Only
	L 1	Stimulation Level 1
	L 2	Stimulation Level 2
	L 3	Stimulation Level 3
	L 4	Stimulation Level 4
	L 5	Stimulation Level 5
	L 6	Stimulation Level 6
	L 7	Stimulation Level 7
	L 8	Stimulation Level 8
	L 9	Auto Mode
Sensor Sensitivity Mode	L	Low Sensitivity
	□□	Medium Sensitivity
	H	High Sensitivity
Pavlovian Tone On/Off	O	Pavlovian Tone On
	F	Pavlovian Tone Off
Test Mode	⌂	Activates test stimulation with current setting value



HOW TO PROGRAM THE BP-504

1) Cycle Through Modes

- Press the **Control** button to scroll through the five modes: **Bark Counter**, **Stimulation Level**, **Sensor Sensitivity**, **Pavlovian Tone ON/OFF**, and **Test Mode**.

2) Change a Mode Setting

1. Use the **Control** button to display the mode you want to adjust.
2. Press and hold the **Control** button for **2 seconds** until the unit beeps and the display starts **blinking** (Programming Mode).
3. While the display is blinking, press the **Control** button to cycle through the available settings for that mode.
4. To save the setting shown, press and hold the **Control** button for **2 seconds** until the unit beeps and the display stops blinking.
 - **Auto-save:** If no buttons are pressed for **10 seconds**, the unit will save automatically and return to **Bark Counter** mode.

3) Normal Operating Mode

- During normal operation, the display turns off automatically, and the battery indicator will continue flashing **green** or **red** if charging is needed.
- Press the **Control** button at any time to show the **Bark Counter** on the display.

BARK COUNTER

The BP-504 automatically starts in **Bark Counter** mode when the unit is powered on or wakes up from sleep.

Important notes:

- If the **5-second safety delay** is enabled, the Bark Counter will **not** count barks during that delay period.
- The Bark Counter tracks the number of **stimulation activations**—not the total number of barks detected.

Resetting the Counter

To reset the Bark Counter, press and hold the **Control** button for **2 seconds**, or until the display returns to **0**.

12

STIMULATION MODES

The Barkless Pro can be set to **Tone Only (L0)** with the tone **ON** or **OFF**.

- When set to L0 with Tone ON, the unit will tone when it detects a bark. This can be helpful for testing the bark sensor.
- After each count, the unit waits **5 seconds** before it can count another bark.

Stimulation Levels

The BP-504 offers **eight stimulation levels** to accommodate different dog sizes and temperaments. Levels are displayed as:

L1, L2, L3, L4, L5, L6, L7, and L8.

Auto Mode (L9)

Auto Mode is displayed as L9. In Auto Mode:

- The unit starts at **Level 1**.
- It increases **one level every 2 activations** until it reaches **Level 8**.
- If barking stops for **10 seconds**, the unit resets back to **Level 1**.

This mode is intended for dogs that need more than basic bark control. **Not recommended for small or sensitive dogs**, as higher levels may be too strong.

SENSOR SENSITIVITY ADJUSTMENT

The BP-504 allows you to adjust how sensitive the bark sensor is. Most dogs will work well on the **Medium (M)** setting. However:

- Dogs with **soft or high-pitched barks** may need **High (H)** for consistent detection.
- Dogs with **very loud barks**, or users who want the unit to react less often, may prefer **Low (L)**.

You know your dog best—choose the setting that fits your dog's bark and your environment.

To Change Sensor Sensitivity

1. When **Sensor Sensitivity mode** is displayed, press and hold the **Control** button for **2 seconds**.
 - The LCD will begin **blinking** and show the current setting.
2. Press the Control button to cycle through the settings:
Low (L) → Medium (M) → High (H).
3. When your desired setting is shown, press and hold the Control button for **2 seconds** to save.
 - The display will stop blinking and the unit will return to normal operation.

PAVLOVIAN TONE ON/OFF ADJUSTMENT

The BP-504 can emit a **tone before stimulation** (often called a *Pavlovian tone*). This brief warning can support training by helping your dog anticipate the correction.

You may want to **turn the tone OFF** if:

- You prefer stimulation to occur **immediately when barking is detected**, or
- Your dog becomes overly reactive to tones or develops unwanted behavior around other sounds.

To Turn the Pavlovian Tone ON or OFF

1. When **Pavlovian Tone** mode is displayed, press and hold the **Control** button for **2 seconds**.
 - The LCD will begin **blinking** and show the current setting.
2. Press the **Control** button to toggle the setting: **ON (O)** or **OFF (F)**.
3. When your desired setting is shown, press and hold the **Control** button for **2 seconds** to save.
 - The display will stop blinking and the unit will return to normal operation.

TESTING YOUR BARKLESS COLLAR

The BP-504 includes a **Test Mode** to verify stimulation output. The **bark sensor** can only be tested while the collar is on a dog, using the steps below.

Test the Stimulation (Test Mode "T")

1. Set the unit to **Test Mode (T)**.
2. Press and hold the **Control** button for **2 seconds**.
 - The collar will activate stimulation for **3 seconds** at the currently selected stimulation level.
 - The LED will blink **red** after about **1 second** of buzzing.

Test the Bark Sensor (on a dog)

1. Set stimulation to **L0 (Zero Stimulation)** and set the tone to **OFF (F)**.
2. Put the collar on your dog and allow a few barks.
 - Note: the collar will only register a bark once **every 5 seconds**.
3. Remove the collar and check the **Bark Counter** display.
4. Adjust **sensor sensitivity** as needed based on the results.

Safety Note: Always test the collar on the **lowest setting first**, ensure the collar is **snug (not tight)** with contact points touching the skin, and **never leave the collar on for extended periods** without checking your dog's neck for irritation.

HOW TO SELECT THE CORRECT STIMULATION

Use the **lowest stimulation level** that effectively reduces unwanted barking. Always start at **Level 1**, then increase gradually until your dog responds appropriately.

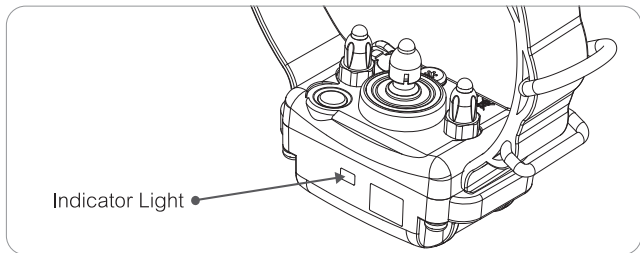
Your dog should **not yelp or show signs of distress**. A mild reaction is normal (such as a brief head turn or momentary pause), similar to noticing a small “buzz.” Increase **one level at a time** to avoid overstimulation.

If you are close to your dog while they bark, you may hear the **warning tone** immediately after the bark, followed by stimulation (if the tone feature is enabled). Some dogs respond well to the tone once they've been conditioned to it.

Some stubborn barkers may require a higher setting over time as they become accustomed to the sensation. You know your dog best—choose the lowest level that clearly communicates that barking is not acceptable. Avoid increasing the level too quickly; barking can become a habit and may take consistent correction to reduce.

For larger dogs that are already conditioned to stimulation, **Auto Mode (L9)** may be a good option when **protection barking is desired but nuisance barking is not**.

INDICATOR LIGHT



Indicator Light

When the unit is powered on, the indicator light shows battery status:

- **Green:** Battery is charged
- **Amber:** Battery will need charging within the next 24 hours
- **Red:** Battery is low and **charging is required** for continued operation

If there is no programming activity or bark activity, the BP-504 will enter **Sleep Mode** to conserve power.

In Sleep Mode, the unit can still detect barks, but it will **not display battery status**. Press the **Control** button to wake the unit.

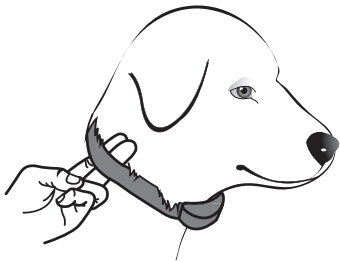
CORRECTLY FITTING THE COLLAR

Fit the collar so the contact points rest directly against your dog's skin. The collar should be snug, but comfortable—you should be able to slide **two fingers** between the strap and your dog's neck.

- **Too tight:** May cause irritation or discomfort
- **Too loose:** The contact points may not maintain contact and stimulation may be inconsistent

For best performance, position the receiver on **either side of the dog's windpipe** (throat area). Placing it directly on the windpipe may work, but it may be less comfortable for some dogs.

Dogs with thick or long fur may require **trimming the coat under the contact points** to ensure reliable contact and proper bark detection.



UNDERSTANDING CONTACT POINT SENSITIVITIES

Some dogs may be sensitive to nickel, which is commonly found in stainless steel. Our standard contact points are made of low-nickel stainless steel, but irritation can still occur in sensitive dogs.

Check the contact area regularly. Signs of sensitivity or irritation may include **redness, swelling, or soreness**.

If your dog shows signs of a nickel sensitivity, we recommend switching to **hypoallergenic contact points** (nickel-free stainless steel or titanium). Contact us to purchase compatible hypoallergenic contact points.

Preventing Skin Irritation

To help prevent irritation caused by pressure or prolonged wear:

- Do not leave the collar on for more than **2 hours per day** at first.
- Once your dog is conditioned to the collar, do not exceed **10 hours per day**.
- Conditioning typically takes **4–8 weeks**.

If Irritation Occurs

If your dog develops irritation from the contact points:

1. **Remove the collar immediately** and discontinue use until the skin is fully healed.
2. If needed, apply a small amount of **antibiotic ointment** to support healing (as directed).
3. For dogs with thick fur, **trim the hair** under the receiver/contact area to improve fit and reduce rubbing.

For additional options (including **thick-fur contact points**), please contact Customer Service or visit www.ecollar.com for more information.

IMPORTANT SAFETY INFORMATION

This product is designed for **canine use only**.

E-Collar Technologies, Inc. is not responsible for misuse of this product, including injury, property damage, lost items, or damages resulting from dog bites.

If your dog has shown aggressive behavior, we recommend consulting a **qualified professional trainer** before using this product. In some cases, dogs may associate stimulation with their handler, which can contribute to **redirected aggression**. Dogs involved in high-arousal situations (such as conflicts with other dogs) may respond unpredictably if stimulation is applied.

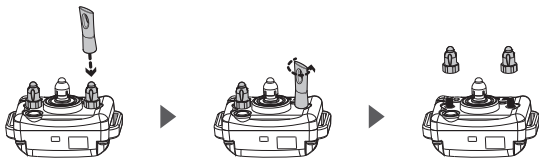
Before beginning bark reduction training, ensure your dog is in good health. Always start with the **lowest effective setting** and only increase as needed to achieve a noticeable improvement in barking behavior.

- Not recommended for dogs **under 4 months** of age.
- Limit use to **no more than 10 hours per day**.
- Consider removing the collar during **playtime** or other close interaction.
- Closely observe your dog's response to the collar before leaving them **unsupervised**.

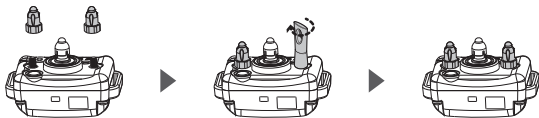
HOW TO CHANGE THE CONTACT POINTS

The standard 5/8" contact points work well for most dogs. Dogs with long or thick coats may require longer contact points (such as 3/4") for reliable skin contact. Use the included contact point tool to replace the contact points.

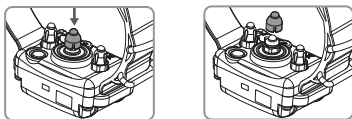
1. Using the included **contact point tool**, rotate each contact point **counterclockwise** to loosen and remove it



2. Install the new contact points by threading them in **clockwise** by hand, then tighten with the tool until **snug**. – Do not overtighten.



3. Snap the **sensor post cap** onto the sensor post so the sensor tip sits level with the longer contact points:



SAFETY AND GENERAL INFORMATION

- **Notice to Prevent Water Damage**

If the receiver is frequently exposed to water, check and tighten the screws once or twice per month (depending on how often it is exposed). Tighten screws until snug, but do not overtighten. This helps prevent internal water damage.

- **Possible Allergy Notice**

Dogs may vary in sensitivity and can develop symptoms of a metal allergy, which may include redness, irritation, hair loss, sores, or swelling. Rotate the collar position slightly each day and check the contact area regularly.

If irritation occurs, hypoallergenic contact points are available for purchase at www.ecollar.com or by calling 260-357-0051.

- **Keep Out of Reach of Children**

This product should not be used by individuals (including children) with limited physical, sensory, or cognitive abilities, or by anyone lacking proper understanding, unless they are supervised by a responsible person. This also applies to cleaning and routine maintenance.

Use only the power supply (charger) provided with this product.

SAFETY AND GENERAL INFORMATION

- **Airway and Respiratory Health Warning**

Tracheal collapse is a condition in which the windpipe (trachea) weakens and narrows over time. It is most commonly seen in **small and toy breeds** (such as Yorkshire Terriers, Chihuahuas, Pomeranians, Shih Tzus, Toy Poodles, and Pugs), and may also occur in other breeds including Bulldogs, Boston Terriers, Lhasa Apsos, and Maltese. This condition is often **genetic** and may involve weakened cartilage rings that support the windpipe.

Do not use this collar on dogs with known or suspected airway or breathing concerns unless directed by a veterinarian. This includes dogs with:

- **Tracheal collapse** or chronic coughing/honking cough
- **Restricted airways** or respiratory disease
- **Brachycephalic anatomy** (short-nosed breeds) or brachycephalic airway syndrome (BOAS)
- Any condition where neck-worn equipment may worsen breathing

If your dog shows **coughing, gagging, wheezing, labored breathing, or signs of distress** while wearing the collar, **remove the collar immediately** and consult a veterinarian before further use.

ONE YEAR WARRANTY

To register your product, visit www.ecollar.com, select the **Warranty Registration** link, and complete the form. We recommend registering your product within **30 days** of purchase.

If you do not have access to a computer, please contact our Customer Service team at 1-260-357-0051 and we will be happy to assist with registration.

If your product is not registered, **proof of purchase may not be required** to obtain warranty coverage. In many cases, we can estimate the purchase date using the product's **serial number**.

Please note: the warranty does not cover damage or issues caused by **misuse, improper maintenance, lost or stolen units, or damage caused by a dog**. We strive to provide exceptional service and ensure your complete satisfaction.

Social Media Resources

- Follow and subscribe to our **Facebook** page for product updates and new innovations.
- Subscribe to our **YouTube** channel for videos on how to use your BP-504.
- Search **E-Collar Technologies** online to learn more.

**“Making Bad Dogs Good
and Good Dogs Better!”**

TECHNICAL SPECIFICATIONS

Model	BP-504
Correction Modes	Tone , Static , Auto
Activation Mode	Adjustable Vibration Sensitivity
Correction Levels	8 Static - Auto - Tone Only
Water Protection Rating	IP68
Collar Receiver Battery	Li-Po, 300 mAh
Battery voltage	3.7V – 4.2V
Charging voltage	5V
Charge Time (full)	1-2 Hours
Battery Life (Standby)	Over 1 week
Operating Temperature	0 – 55°C
Storage temperature / Humidity	- 40 –85°C / 30% RH
"Risk of fire or explosion if the battery is replaced by an incorrect type"	
"Use a power adapter that meets PS2 or LPS requirements."	



E-Collar Technologies, Inc.

2120 Forrest Park Drive

Garrett, IN 46738-1887

1-260-357-0051 (US & International)

sales@ecollar.com

www.ecollar.com

customerservice@ecollar.com

© 2015 E-Collar Technologies, Inc.



Thank you for Supporting American Workers