



Easy Educator EZ-900/902

Owner's Manual

E-Collar Technologies, Inc.

Welcome to the World of E-Collar Training

Dear valued customer,

Congratulations on the recent purchase of your E-Collar training system. We are confident that you will be pleased with the results achieved through the use of our e-collar training system. We have taken great care to incorporate numerous safety features to ensure a positive experience for both you and your dog.

To maximize your success, it is crucial to employ the lowest level of stimulation and approach the training process with patience and understanding. By applying gentle leash pressure and using a low level of stimulation, you will achieve the best outcomes. It is important for your dog to recognize the sensation from the stimulation as a means of communication, rather than something to be feared.

It is recommended that the use of our training system be incorporated into a comprehensive training program. We suggest taking the time to familiarize yourself with the features and functions of your E-Collar before placing the collar on your dog. Additionally, please consider subscribing to our YouTube and Facebook pages for educational resources on the proper use of e-collars.

We wish you the best of luck with your training endeavors and encourage you to reach out to us at any time for assistance.

This guide is designed to provide you with assistance on the fundamental functions, programming features, and contents of your E-Collar training system. For further information and support, please visit www.ecollar.com or reach out to us at customerservice@ecollar.com.

We encourage you to contact our esteemed customer service department for any inquiries you may have at (260) 357-0051.

TABLE OF CONTENTS

Preparing Device

- Important Notice	3
- Package Contents	4
- Device Composition	5
- How To Charge Devices	6
- How to Connect the Charger	7
- Turning ON/OFF the 900 Series	8
- Correctly Fitting Collar	9
- How to change the Contact points	10

How to use Device

- LCD Display Description	11
- EZ900 Default Button Preset & Usage	12
- How to Find Proper Stimulation Level	12
- Program Stimulation Buttons	13
- How to Lock & Unlock Stimulation Level	13
- Instant Stimulation / Boost Level setup	14
- Computer Interface Tool	15
- Night Tracking Light / Lost Transmitter	17
- Two Button Booster	18
- How to Replace for New Receiver by Pairing	18
- Testing Your E-Collar	19

EZ-902

- 2 Dog System	20
- How to Add & Replace for 2Dog Receiver	20
- EZ-902 Default Button Preset & Usage	21
- How to Find Proper Stimulation Level	21
- EZ-902 Program Stimulation Buttons	22
- How to Lock & Unlock Stimulation Level	22

Additional Device Information

- Simple Chart for EZ900 Series Function	23
- Important Training Tip	24
- Additional Contact Points	24
- Troubleshooting	25
- Two Year Warranty	26
- Accessories	27
- Safety and General Information	28
- Important Notice	29
- Technical Specifications	30

Important Notice

This product is specifically designed for canine use only.

E-Collar Technologies, Inc. assumes no responsibility for any misuse of this product, including damages caused by dog bites and lost items. Before using this product on aggressive dogs, it is advised to seek an evaluation by a professional trainer. It is not uncommon for aggressive dogs to associate the stimulation with the handler and potentially act against them. In some cases, dogs that are subjected to e-collar pressure during a fight may display redirected aggression and become even more aggressive.

The use of high levels of stimulation should only be considered as a last resort and in life-threatening situations. To avoid unintentionally stimulating your dog, it is recommended to keep the stimulation level below 5 when the product is not in use.

The effective range of your E-Collar training device may be influenced by various factors such as terrain, weather conditions, presence of trees or power lines, and potential interference from other wireless devices.

Positioning the transmitter for maximum range.

For optimal range, grasp the transmitter in a manner similar to holding a torch, such as the one held by the Statue of Liberty. Ensure that the antenna remains separate from your body and fingers at all times, as touching the antenna can significantly diminish the range.



[Long Range]



[Medium Range]

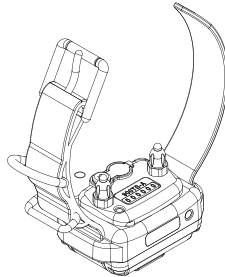
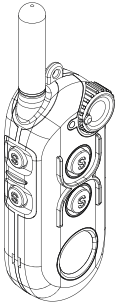


[Short Range]

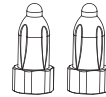
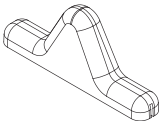
04

Package Contents

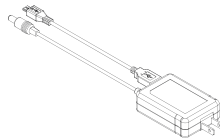
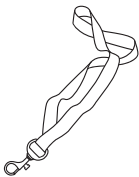
- Ergonomic Transmitter
- Waterproof Collar Receiver + High Quality Biothane Strap
- Owner's Manual



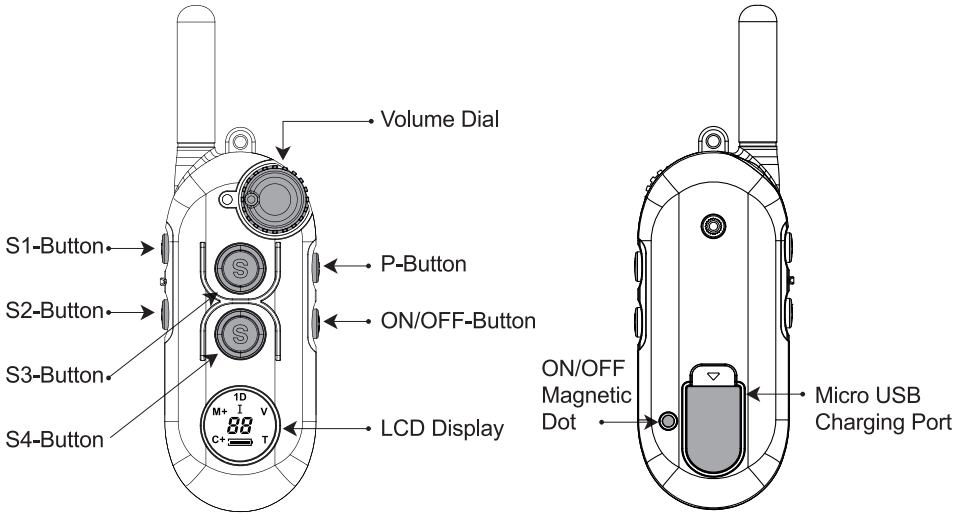
- Test Light
- Contact Point Tool
- 5/8" and 3/4" Contact Points



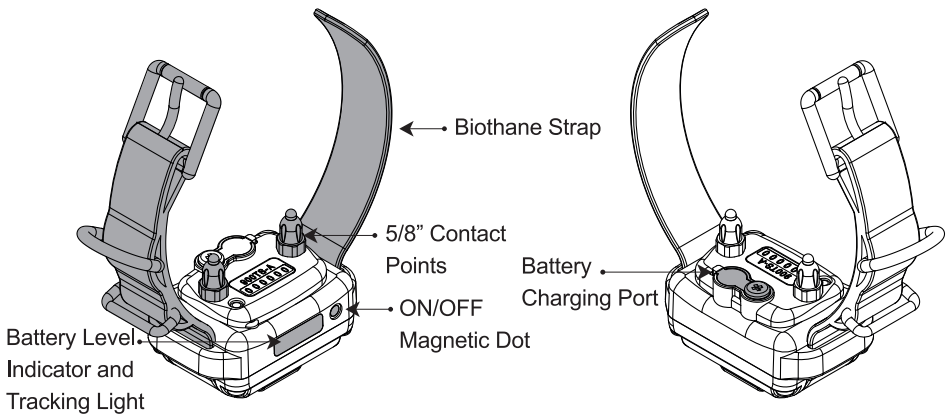
- Lanyard
- Battery Charger
- Metal Belt Clip



Device Composition



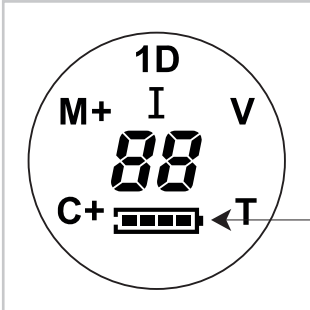
S1, S2, S3, S4	Programmable Stimulation Button
P-Button	Lock/Unlock Button
ON/OFF Button	Turn Device ON/OFF
Volume Dial	Adjust Stimulation Level



06

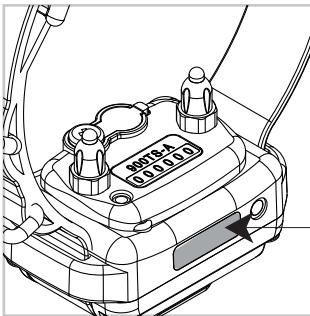
How to Charge Devices

Important Notice : Take off the charger from when device is fully charged for longer battery life



Transmitter :

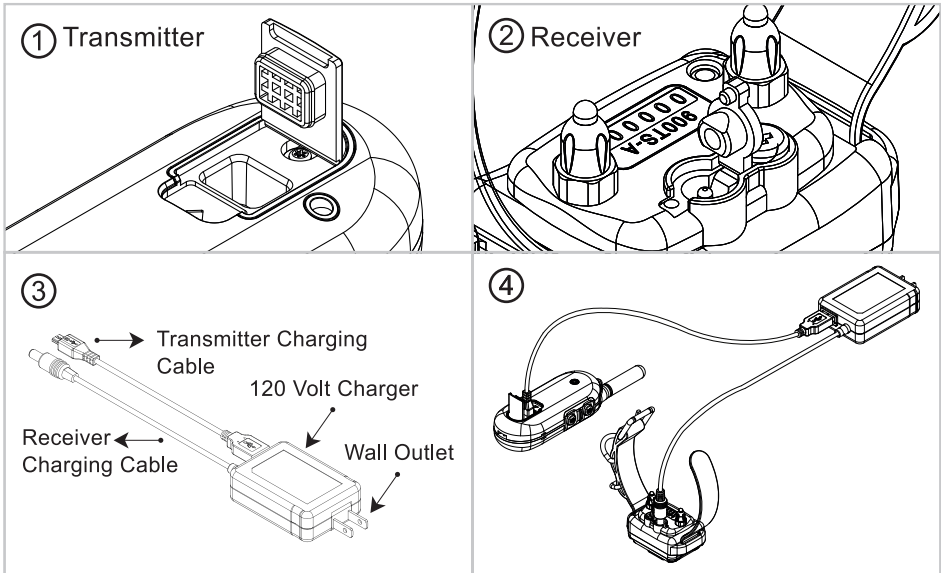
The battery life is displayed on the LCD.



Receiver :

- Indicator light is blinking "Green" when battery level is okay.
- Indicator light is "Amber" when battery level below 30%.
- Indicator light is "Red" when battery is very low.

How to Connect the Charger



Each Unit can be charged separately or together.

Indicator light is red during charging and turn green when it is fully charged.

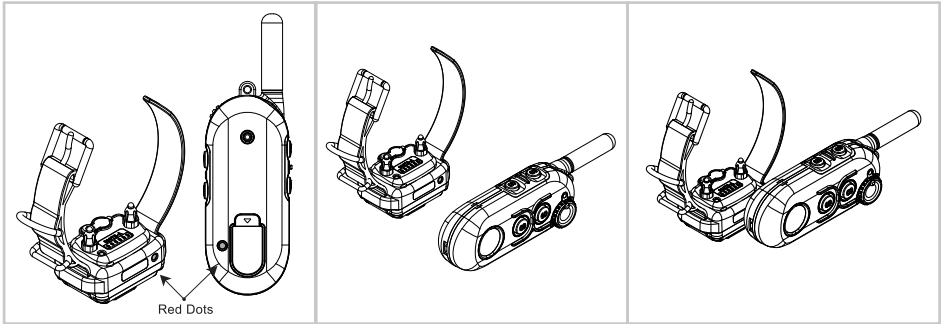
Your e-collar is equipped with Li-Polymer batteries that need specific attention to ensure their longevity. It is advisable to avoid fully discharging the battery. In the event of complete discharge, please recharge it promptly to prevent irreversible damage. Additionally, please keep the units away from excessive heat and cold temperatures.

08

Turning ON/OFF the 900 Series

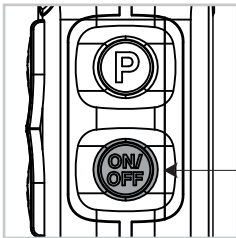
Turning Receiver ON and OFF

COLLAR RECEIVER turn ON/OFF by using magnet technology.



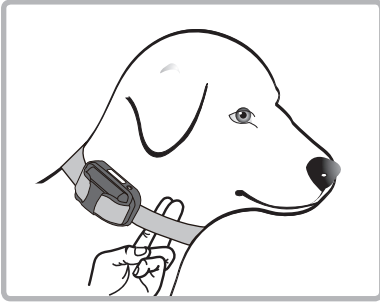
Put red dot on rear of Transmitter close to the red dot on the receiver.

Turning Transmitter ON and OFF



Press the "ON/OFF Button" for more than 1

Correctly Fitting Collar



The collar should be adjusted to allow the “contact points” to have direct contact with the skin. You should be able to fit a couple of fingers between the collar strap and your dog’s skin. Too tight poses the risk of skin irritation and discomfort.

Too loose and the contact points will not be able to administer the stimulation reliably and can cause skin irritation due to chafing. Short hair breeds may need the 3/8” microprobes offered as an accessory item, contact customer service for details. The optimal position for the collar receiver is on either side of the dog’s windpipe.

If the factory installed 5/8” contact points are not making good contact due to thick fur, see page 24 for changing contact point.

IMPORTANT NOTICE

To prevent the occurrence of skin irritations the Collar Receiver should never be worn for more than 12 hours per day. Should your dog experience skin irritations from over exposure to the contact points remove the collar receiver unit immediately and stop using your e-collar until all skin irritations are completely healed. Antibiotic ointment will aid in the healing process. Some dog breeds have extra thick fur or extra short fur that requires special contact points. Please contact our customer service or visit www.ecollar.com for more information.

10

Correctly Fitting the Collar

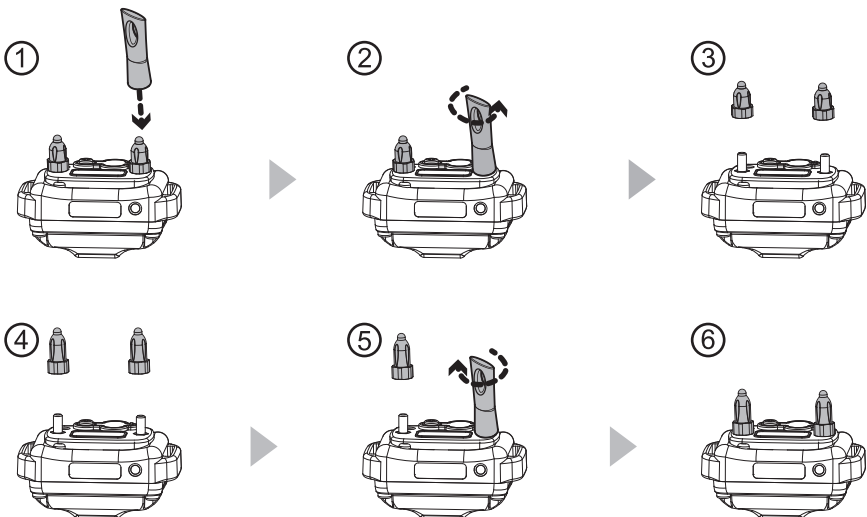
always seat the collar receiver by giving it a little wiggle to remove any hair that is between the contact points and the dog's skin.

The optimal position for the collar receiver is on either side of the dog's windpipe in the 2 to 5 or the 7 to 10 o'clock position; most dogs don't like it on their windpipes.

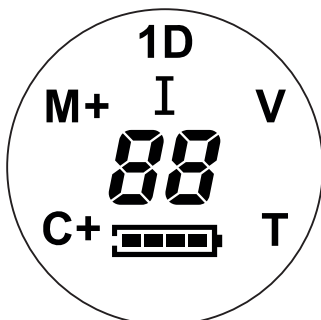
Periodically switching positions during a full day of e-collar use is good practice and can help prevent irritations from occurring. Inspecting the area is very important to assure your dog is handling the pressure from the contact points.

How to Change the Contact Points

If the 5/8" factory installed contact points do not make good contact due to long hair, you can easily change to 3/4" contact points with the contact point tool. Follow diagrams step by step. Very long and thick coats require special contact point, available for purchase on ecollar.com



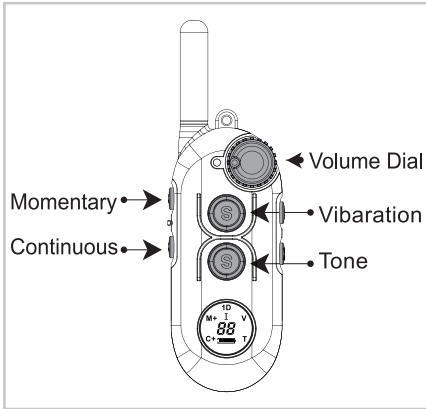
LCD Display Description



Icon	Description	Action
M	Momentary Stimulation	Send Single Stimulation in short duration
M+	Momentary Boost Stimulation	Send boosted single stimulation in short duration
C	Continuous Stimulation	Sends stimulation continuously up to 10 seconds.
C+	Continuous Boost Stimulation	Sends stimulation countinuously up to 10 seconds.
I	Instant Stimulation Mode	Gives Continuous Stimulation up to 45 seconds follows by Volume Dial Volume Dial must be 0 to activate
V	Vibration	Vibrate up to 30 seconds
T	Tone	Flat sound up to 30 seconds

12

EZ-900 Default Button Preset & Usage



Important Notice: Upon receiving the device, there are four preset modes available. These modes can be administered to your dog by pressing the corresponding button as indicated in the diagram. It is recommended to always begin with the dial set at a low level. Please refer to the pg 11 to familiarize yourself with how each mode works before applying it to your dog.

How to Find Proper Stimulation Level

The 900 series offers a range of 100 stimulation levels to support efficient training. Understanding the appropriate stimulation level for your dog is essential for successful training. Please refer to this guide for assistance in finding the right stimulation level for your dog.

Please note: To increase the stimulation level, rotate the Volume Dial counterclockwise. To decrease the stimulation level, rotate the Volume Dial clockwise.

It is recommended that users practice adjusting levels and modes before placing the collar receiver on a dog. It is crucial to set the correct stimulation level for your dog. To establish the "conditioning" stimulation level, follow the instructions on page 9 to properly place the collar receiver on your dog. Allow your dog to acclimate to the collar receiver for a few hours.

Monitor your dog closely and begin with the stimulation level at "0." Gradually increase the stimulation at a rate of approximately 2-3 levels per second while observing your dog. Once your dog first reacts to the stimulation, typically between levels 5 and 20, release the button. This will be your "conditioning" stimulation level.

Initially, you may need to raise the "conditioning" level a few levels to elicit a response from your dog, as some dogs may require more stimulation. The boosted level is typically 5 to 20 levels higher than the "conditioning" level.

Program Stimulation Buttons

You can Program any stimulation mode to S1, S2, S3 and S4 Buttons.

Follow instruction is example of change the stimulation mode of S1 button

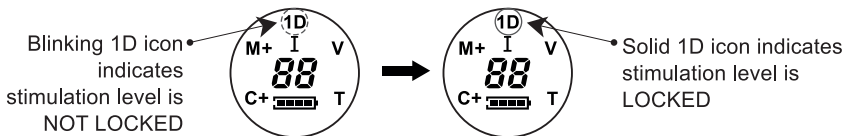
1. Press and hold P button and press S1 button to check current mode.
You can see the current mode until release P button.
2. While pressing P button, press S1 button repeatedly to change mode.
3. Stimulation mode will change as follow :



4. Repeat step 1 to 3 to program other button.

How to Lock & Unlock Stimulation Level

Lock the stimulation level to protect from unexpected high level stimulation.



How to LOCK

1. When **1D icon** is blinking, use volume dial to change stimulation level.
2. Press P button until **1D icon** on LCD changes blinking to solid.

How to UNLOCK

1. When **1D icon** is solid,
2. Press P button until **1D icon** on LCD changes solid to blinking

Important Notice: When Stimulation is locked, Stimulation level will not change even though you change the Volume Dial


14

Instant Stimulation

The Instant Stimulation feature provides a continuous stimulation for up to 45 seconds. The Volume Dial must be set to zero in order to activate the Instant Stimulation level.

Please be aware that your dog will receive stimulation every second until the Instant Stimulation is turned off. Please use caution when using this feature.

User must activate the "I" mode by using the computer interface tool.

1. Set continuous stimulation on any Stimulation Button.
2. Turn Volume Dial to 0 to activate (Require).
3. Press continuous Stimulation Button at #1, You will see [] icon.
Turn Volume Dial for starting stimulation.
4. Stimulation will automatically shut down in 45 seconds.
Change stimulation level to 0 level will reset the 45 seconds safety timer.
5. Press any Stimulation Button to turn off Instant Stimulation.

Boost Level Setup

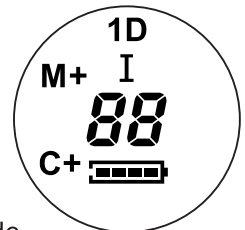
Boosted stimulation gives stronger than regular stimulation.

For example, when stimulation level is 25 and boost level is 5.

Momentary Boosted Stimulation (M+) gives 30 level stimulation. (25 + 5)

Default Boost Level is 5.

1. Set momentary stimulation on any Stimulation Button.
2. Turn Volume Dial to 0
3. Press momentary Stimulation Button at #1
until M+ C+ icons on LCD
4. Change to desire boost level with Volume Dial.
5. Press same button as #1 to save&exit from setup mode.



For EZ902, Each dog can have different boost level.

At Step#1, To change 1D boost level, set S1 or S3 as Momentary

To change 2D boost level, set S2 or S4 as Momentary

Computer Interface Tool



With the computer interface tool, you have the ability to modify the settings on your EZ 900/902 series E-Collar to customize it to suit your dog's unique requirements. To make adjustments to the Vibration and Tone type, you will need to utilize the computer interface tool, which is conveniently accessible for download at www.ecollar.com. Please note that this program is most compatible with windows OS and Uses Java 8 Update 211 (32-bit).

Some Mac OS customers have had success using Parallels— to run the 900 interface tools on their Mac computers.

- **Multi-Dog Selection:**

Quick and easy selection of one, two or three dog modes.

- **Button Selection Drop downs:**

Convenient drop down for each control button provides quick and easy selection of the desired sensation.

- **Level Lock:**

Ability to lock the level preventing accidental over stimulation by inadvertent movement of the dial.

- **Boost Level:**

Allows the user to select a level between 1 and 60 which provides for an emergency.

16

Computer Interface Tool

5 Stimulation Modes to Choose From:

- Momentary - Momentary Pulse of Stimulation
- Momentary Boost - Momentary Pulse of Boosted Stimulation
- Continuous - Continuous Stimulation up to 10 Seconds
- Continuous Boost - Continuous Boosted Stimulation up to 10 Seconds
- Patented “Instant Stim” - Enables gradual stimulation through the use of the thumb wheel, eliminating the need for any manual button activation.

7 Vibration Modes to Choose From:

- H - High Continuous Vibration
- M - Medium Continuous Vibration
- L - Low Continuous Vibration
- TS-H - High Tapping Sensation – 1 second on and 1 second off
- TS-M - Medium Tapping Sensation – 1 second on and 1 second off
- TS-L - Low Tapping Sensation – 1 second on and 1 second off
- TA - Two seconds of Continuous medium vibration followed by continuous stimulation; commonly known as Classical or Pavlovian Conditioning

4 Tone (Pitch) Frequencies to Choose From:

- H - High Continuous Tone
- M - Medium Continuous Tone
- L - Low Continuous Tone
- PA - Two seconds of continuous medium tone followed by continuous stimulation; commonly known as Classical or Pavlovian Conditioning

Night Tracking Light

Night Tracking Light provides bright light from the receiver.

This feature provides bright vision around your dog and shows where your dog is heading to.

Press P button will change Receiver light status.

OFF → Blinking → Solid → OFF

Important Notice:

Using this feature cause spend Receiver's battery more than usual.

Lost Transmitter

Lost Transmitter is alarm feature, which prevents lost of transmitter.

If you activate Lost Transmitter feature, device will make a high tone sound after 6 hours.

1. Turn Volume Dial to 0, and press [ON/OFF + P] to activate
2. Single short beep and [**On**] on LCD confirm the activation.
3. Press [ON/OFF + P] to deactivate. Two short beeps confirm deactivate.

It is important to activate the Lost Transmitter mode before embarking on a hike or engaging in activities where misplacing the transmitter is a possibility.

18

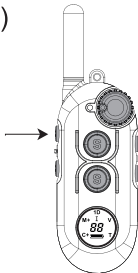
Two Button Boost

To send boosted stimulation. Press two button combination

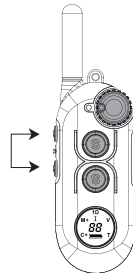
Important Notice : This feature only support for Momentary and Continuous.
There is No vibration boost or tone boost.

1. Press Stimulation Button either Momentary or Continuous
2. Before you release stimulation button, press above or beneath Stimulation Button simultaneously for additional boosted stimulation

Exmample)



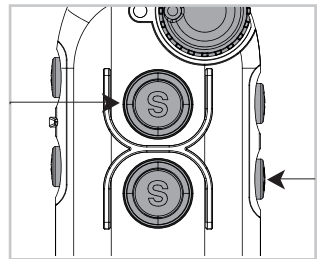
S1 - Momentary



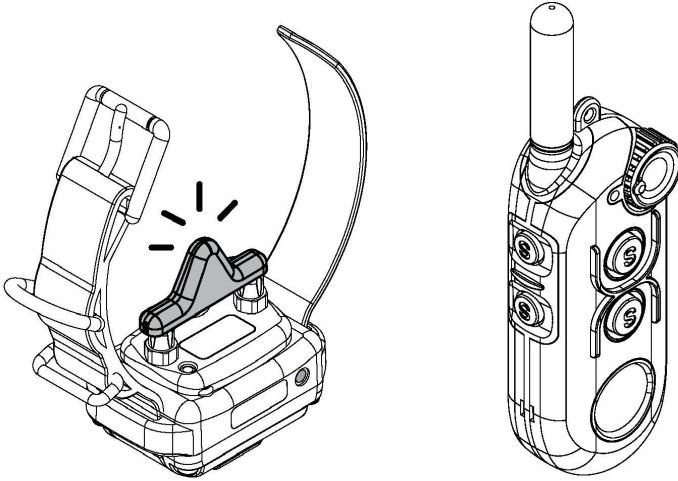
S1 + S2 simultaneously
for Momentary Boost stimulation

How to replace for new Receiver by Pairing

1. Make sure the Receiver is turned off.
2. Change the Volume Dial to 0
3. Put Transmitter's red dot on Receiver's red dot for more than 5 seconds.
4. If Indicator Light on receiver rapidly blinking with green color, press [ON/OFF + S3] to complete pairing.
5. You will hear confirming sound.



Testing Your E-Collar



If you need to check your unit, hold the test light against the contact points on the collar receiver. This test will let you know that the collar receiver is generating the proper sensation to the dog, it should brighten in a smooth fashion as the dial is turned up.

Some people find it easier to hold the collar receiver on their forearm while slowly turning the stimulation up using the continuous mode, typically as humans we will begin to feel the simulation around a level 8 to 25 depending on the dryness of the skin.

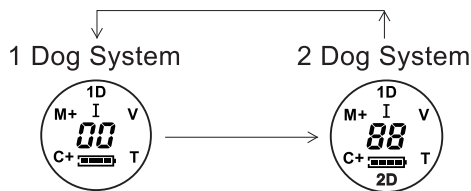
Feel free to contact us if you have need help, 1-260-357-0051.

20

2 Dog System

900 Series supports multi dog system, which is expandable up to 2 dogs. Press ON/OFF button + S1 button simultaneously to change Dog System.

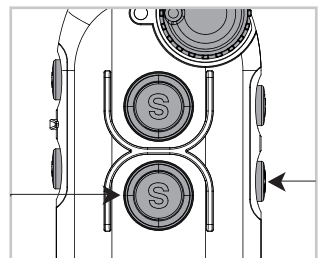
1. Change Volume Dia to 0,
2. Press [ON/OFF + S3 + S4] simultaneously to change to EZ902
Press [ON/OFF + S1 + S2] simulataneously to go back to EZ900



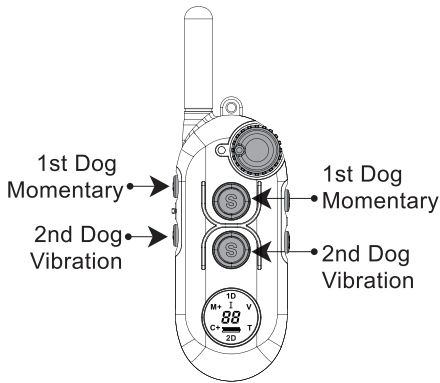
Stimulation Buttons	Stimulation buttons for each Dog System	
	1 Dog System	2 Dog System
S1-Button	Dog 1	Dog 1
S2-Button	Dog 1	Dog 2
S3-Button	Dog 1	Dog 1
S4-Button	Dog 1	Dog 2

How to Add & Replace for 2Dog Receiver

1. Make sure the Receiver is turned off.
2. Change the Volume Dial to 0
3. Put Transmitter's red dot on Receiver's red dot for more than 5 seconds.
4. If Indicator Light on receiver rapidly blinking with green color, press [ON/OFF + S4] to complete pairing.
5. You will hear confirming sound.



EZ-902 Default Button Preset & Usage



Important Notice: Upon receiving the device, there are four preset modes available. These modes can be administered to your dog by pressing the corresponding button as indicated in the diagram. It is recommended to always begin with the dial set at a low level. Please refer to the pg 11 to familiarize yourself with how each mode works before applying it to your dog.

How to Find Proper Stimulation Level

The 900 series offers a range of 100 stimulation levels to support efficient training. Understanding the appropriate stimulation level for your dog is essential for successful training. Please refer to this guide for assistance in finding the right stimulation level for your dog.

Please note: To increase the stimulation level, rotate the Volume Dial counter-clockwise. To decrease the stimulation level, rotate the Volume Dial clockwise.

It is recommended that users practice adjusting levels and modes before placing the collar receiver on a dog. It is crucial to set the correct stimulation level for your dog. To establish the "conditioning" stimulation level, follow the instructions on page 9 to properly place the collar receiver on your dog. Allow your dog to acclimate to the collar receiver for a few hours.

Monitor your dog closely and begin with the stimulation level at "0." Gradually increase the stimulation at a rate of approximately 2-3 levels per second while observing your dog. Once your dog first reacts to the stimulation, typically between levels 5 and 20, release the button. This will be your "conditioning" stimulation level.

Initially, you may need to raise the "conditioning" level a few levels to elicit a response from your dog, as some dogs may require more stimulation. The boosted level is typically 5 to 20 levels higher than the "conditioning" level.

22

EZ-902 Program Stimulation Buttons

You can Program any stimulation mode to S1, S2, S3 and S4 Buttons.

Change modes of S1 and S3 for 1D, change S2 and S4 for 2D (Page 16)

Follow instruction is example of change the stimulation mode of S1 button

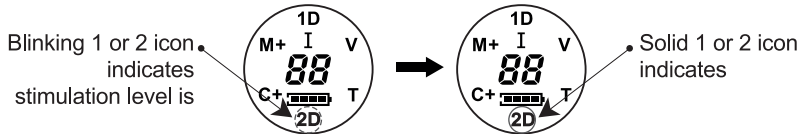
1. Press and hold P button and press S1 button to check current mode.
You can see the current mode until release P button.
2. While pressing P button, press S1 button repeatedly to change mode.
3. Stimulation mode will change as follow :



4. Repeat step 1 to 3 to program other button.

How to Lock & Unlock Stimulation Level

Lock the stimulation level to protect from unexpected high level stimulation.



How to LOCK

1. When 1 or 2 icon is blinking, use volume dial to change stimulation level.
2. Press [P+S3] button for 1D, until 1 icon changes blinking to solid.

Press [P+S4] button for 2D, until 2 icon changes blinking to solid

How to UNLOCK

1. When 1 or 2 icon is solid,
2. Press [P+S3] button for 1D, until 1 icon changes solid to blinking.
Press [P+S4] button for 2D, until 2 icon changes solid to blinking.

Important Notice : When Stimulation is locked, **Stimulation will send LOCKED stimulation level** even though you change the Volume Dial.

You can LOCK different stimulation for each dog

Simple Chart for EZ900 Series Function

EZ-900

Program Buttons	Function	Description
ON/OFF	Power ON/OFF	Press more than 1 sec to turn ON Press more than 2 sec to turn OFF
	Light	Press to turn on/off RX light (togglng : Blink → Solid → Off)
P	Volume Lock Stimulation Lock Level	Press more than 1 sec to Lock/unlock Stimulation Level
	Mode Buttons	Set Stimulation level "0" S1 mode change P+S1(M→C→V→T) S2 mode change P+S2(C→V→T→M) S3 mode change P+S3(V→T→M→C) S4 mode change P+S4(T→M→C→V)

EZ-902

Program Buttons	Function	Description
ON/OFF	Power ON/OFF	Press more than 1 sec to turn ON Press more than 2 sec to turn OFF
	Light	1D light ON/OFF + S1 (togglng: blink→solid→off) 2D light ON/OFF + S2 (togglng: blink→solid→off)
P	Volume Lock Stimulation Lock Level	1D Volume lock: P+S3(more than 1 sec) 2D Volume lock: P+S4(more than 2 sec)
	Mode Buttons	Set Stimulation level "0" S1(Dog1) mode change: P+S1(M→C→V→T) S2(Dog2) mode change: P+S2(M→C→V→T) S3(Dog1) mode change: P+S3(V→T→M→C) S4(Dog2) mode change: P+S4(V→T→M→C)

24

Important Training Tip

E-Collars can be utilized to reinforce commands that your dog already knows or as a learning tool when combined with leash pressure. It should be noted that they are not intended to replace basic leash obedience training, but rather to enhance your ability to communicate with your dog. For optimal outcomes, it is recommended to utilize the minimal amount of stimulation necessary to capture your dog's attention. A composed and consistent approach to training will consistently yield better long-term results. It is strongly advised that owners of aggressive dogs consult a professional trainer for evaluation prior to incorporating an e-collar. Various e-collar training techniques are recommended by different professional trainers. We believe that as the owner, you are best equipped to determine the most effective technique for your dog. For first-time users, we suggest immersing yourself in learning about the proper techniques or seeking the guidance of a professional e-collar trainer. The method employed in initially introducing the e-collar is crucial to the success of the training.

You can find helpful training videos by searching for E-Collar Technologies on YouTube and subscribing to our channel, as we regularly post new content. Additionally, please consider "Liking" our Facebook page to receive further training advice and connect with other e-collar users.

Additional Contact Points

Keep a watchful eye on your dogs skin where the contact points are touching his/her skin for redness or any sign of irritation. This should be done hourly at first and slowly transition to once every four hours after a month of daily wearing of the e-collar. At first notice of redness, immediately switch to one of our hypo allergenic contact points. We offer both nickel free stainless steel and titanium contact points. Dogs with sensitive skin and certain skin sensitive breeds like Pit Bull Terriers and Boxers should be switched early in the process as precautionary move.

Available on www.ecollar.com or by calling 1-260-357-0051

Nickel Free Stainless Steel

Hypo Allergenic 100% Titanium

Troubleshooting

? My Receiver / Transmitter is not turning on

- A Make sure the Receiver has been charged. We recommend device fully charge before use.

? My Receiver is not responding

- A Check Receiver's indicator light is blinking green and Transmitter LCD to check device power.
- A Check Receiver's indicator light is red when you press any stimulation button.
 - A. If you don't see any red light, check your device using right Multi dog system. For example, if you have one dog, you must small 1 icon only at "Multi Dog system Indicator" on LCD display.
 - B. If still Receiver not respond, Try pairing with Receiver one more time.

? I think receiver gives no stimulation at all

- A Remove Contact points from Receiver. Connect Test Light on the Receiver and try any stimulation. If the test light is blinking, receiver is giving stimulation.

? Max range of device has been decreased

- A Check Transmitter's battery condition. Working range decrease if battery level is too low.
- A Holding position is important; keep finger away from the antenna. Touching the antenna by finger will greatly reduce the range.

? I want to reset the Transmitter as default

- A For EZ900, rotate Volume Dial to 0, press [ON/OFF+S1+S2] simultaneously until you hear beep sound. Press [ON/OFF+S3+S4] for EZ902.

26

Two Year Warranty

To register your product, kindly visit our website at www.ecollar.com. Click on the warranty registration link and complete the necessary information. We kindly ask that you register your product within 30 days of your purchase. If you are unable to access a computer, please feel free to contact one of our dedicated customer service representatives at 1-260-357-0051. They will be happy to assist you in registering your product. If, for any reason, your product is not registered properly, proof of purchase will not be required to obtain warranty coverage. We will be able to estimate your purchase date based on the serial number. It is important to note that misuse, improper maintenance, lost or stolen units, and dog damages are not covered under the manufacturer's warranty. We strive for your complete satisfaction and aim to provide exceptional service.

**“Making Bad Dogs Good
and Good Dogs Better!”**

Accessories

- Titanium Hypo-Allergenic Contact Pints



- Thick Fur Contact Points



- Short Point Comfort Pads



- Magnetic AnyWear Clip



- Ultra Wing Contact Point Comfort Pads



- Gear Keeper



- Bungee Collar



- Quick Snap Bungee Collar



www.ecollar.com

28

Safety and General Information

The EZ 900 Series Collar complies with all National and International Standards and Guidelines for human exposure to radio frequency electromagnetic energy.

Nearly all electronic devices are susceptible to electromagnetic interference (EMI) if inadequately shielded or designed without precautions to EMI.

EZ 900 Series e-collar transmitters manufactured by E-Collar Technologies, Inc. comply with Article 15 of the FCC rules and operate under Part 95 of FCC regulations.

Operating Frequency Band is 27.095 MHz.

1. IMPORTANT NOTICE

To avoid Electromagnetic Interference and/or compatibility conflicts, please turn off your transmitter and collar receiver in any facility where posted notices instruct you to do so. Never use your equipment in close proximity of a Hospital or Health Care Facility or enter the facility without turning off both units.

2. An FCC license is not needed to operate EZ 900 Series e-collar transmitters. However, any change or modification made to the transmitter, including the supplied antenna, without the expressed written approval of E-Collar Technologies, Inc. could void your authority to operate.

Important The Notice

NOTICE

Possible Metal Allergy

Dogs vary in sensitivity and may develop symptoms of a metal allergy. Which may include irritation, redness, hair loss, sores, etc. Please rotate collar receiver from side to side daily to check for allergies. If allergies occur, hypoallergenic contact points are available for purchase

at www.ecollar.com or 260-357-0051

NOTICE TO PREVENT WATER DAMAGE

If Receiver is exposed to water on a regular basis, tighten screws once or twice a month depending on the frequency of water exposure.

Please make sure screws are snug but not overly tight.

This will help prevent internal water damage.

ITEM SHOULD BE PLACED OUT OF THE REACH OF CHILDREN

This product is not meant to be used by individuals (including children) with limited physical, sensory, or cognitive abilities, or those lacking expertise and understanding, unless they are under the supervision or guidance of a person responsible for their safety. This also applies to the cleaning and upkeep of the item.

The item should exclusively be used with the power supply (charger) provided with the product.

Important Notice to Consumer/User

In no event shall our company be liable for any direct, indirect, punitive, incidental, special consequential damages, to property or life, whatsoever arising out of or connected with the use or misuse of our products.

30

Technical Specifications

Transmitting and receiving standard frequency	27 Mhz
Operating range (maximum effective range of open space)	1/2 mile range
Degree of protection	IP68
Transmitter battery (Li_Po)	720mAh
Collar Receiver battery (Li_Po)	300mAh
Battery voltage	3.7V ~ 4.2V
Charging voltage	5V
Time for battery fully charged	1-2 Hours
Collar Receiver Battery Life (Standby mode)	24 ~ 48 Hours
Transmitter Battery Life (Standby mode)	Battery last more then 1 week
Working temperature	0 ~ 55°C
Storage temperature / Humidity	-40 ~ 85 °C / 30%

"Risk of fire or explosion if the battery is replaced by an incorrect type"

"Use an adapter that satisfies PS2 or LPS"



E-Collar Technologies, Inc.

This product is covered by various patents including but not limited to patents 8757098 and 8833309. Patent is pending on the Instant Stimulation Feature on this device.

2120 Forrest Park Drive
Garrett, IN 46738-1887
1-260-357-0051 (US & International)

sales@ecollar.com
www.ecollar.com
customerservice@ecollar.com

patents pending
2014 E-Collar Technologies, Inc.



Thank you for Supporting American Workers

Copyright 2015 E-Collar Technologies, Inc.

All Rights Reserved.