



Welcome to the World of
E-Collar Technologies, Inc.

400/402
Owner's Manual

**“Happiness is a Well
Behaved Dog”**

Welcome to the World of E-Collar Training



400 Series E-Collar

Remote Education Collar

Dear valued customer,

Congratulations on the recent purchase of your E-Collar training system. We are confident that you will be pleased with the results achieved through the use of our e-collar training system. We have taken great care to incorporate numerous safety features to ensure a positive experience for both you and your dog.

To maximize your success, it is crucial to employ the lowest level of stimulation and approach the training process with patience and understanding. By applying gentle leash pressure and using a low level of stimulation, you will achieve the best outcomes. It is important for your dog to recognize the sensation from the stimulation as a means of communication, rather than something to be feared.

It is recommended that the use of our training system be incorporated into a comprehensive training program. We suggest taking the time to familiarize yourself with the features and functions of your E-Collar before placing the collar on your dog. Additionally, please consider subscribing to our YouTube and Facebook pages for educational resources on the proper use of e-collars.

We wish you the best of luck with your training endeavors and encourage you to reach out to us at any time for assistance.

This guide is designed to provide you with assistance on the fundamental functions, programming features, and contents of your E-Collar training system. For further information and support, please visit www.ecollar.com or reach out to us at customer-service@ecollar.com.

We encourage you to contact our esteemed customer service department for any inquiries you may have at (260) 357-0051.

02

TABLE OF CONTENTS

- Important Notice	03
- Characteristics	04
- Package Contents	05
- Device Operation	06
- Charging the Batteries	07
- Turning Your E-Collar ON/OFF	08
- Correctly Fitting Collar	09
- The LCD Display Description	10
- Button functions	11
- How to Find the Proper Stimulation Level	13
- Lock/Unlock the Stimulation Level	14
- How to Set the Boost	15
- Lost Transmitter Mode	16
- Replace/Add Collar	17

Two Dog 402 Specifics

- 402 LCD Description	18
- 402 Button Functions	19
- How to Lock/Unlock the Stimulation Level	21
- 402 Boost Level Setup	22
- Testing Your E-Collar	23
- Replacing the Contact Points	24
- Training Tip	25
- Troubleshooting	26
- Two Year Warranty	27
- Accessories	28
- Safety and General Information	29
- Important Notice	30
- Technical Specifications	31

IMPORTANT NOTICE

This product is specifically designed for canine use only.

E-Collar Technologies, Inc. assumes no responsibility for any misuse of this product, including damages caused by dog bites and lost items. Before using this product on aggressive dogs, it is advised to seek an evaluation by a professional trainer. It is not uncommon for aggressive dogs to associate the stimulation with the handler and potentially act against them. In some cases, dogs that are subjected to e-collar pressure during a fight may display redirected aggression and become even more aggressive.

The use of high levels of stimulation should only be considered as a last resort and in life-threatening situations. To avoid unintentionally stimulating your dog, it is recommended to keep the stimulation level below 5 when the product is not in use.

The effective range of your E-Collar training device may be influenced by various factors such as terrain, weather conditions, presence of trees or power lines, and potential interference from other wireless devices. Positioning the transmitter for maximum range.

For optimal range, grasp the transmitter in a manner similar to holding a torch, such as the one held by the Statue of Liberty. Ensure that the antenna remains separate from your body and fingers at all times, as touching the antenna can significantly diminish the range.



[Long Range]



[Medium Range]



[Short Range]

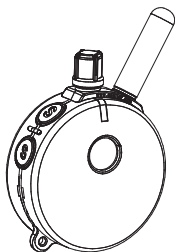
04

CHARACTERISTICS

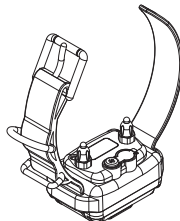
- Range : 3/4 Mile
- Three Stimulation Modes Supported
(Momentary, Continuous, and Dombo Mode)
- Tapping Sensation or Tone Stimulation (Pavlovian Conditioning)
Tapping Sensation : Alternative to Stimulation
(give vibration similar to a Cell Phone)
Tone Stimulation : After 1.2 seconds of tone, the collar will send stimulation as long as button is pressed (up to 10 seconds), leads to "Pavlovian Conditioning" whereby the dog responds to the tone.
- Quick Charge Li-Polymer Batteries
- Convenient Intensity Dial for Quick Adjustment
- Stimulation Levels Adjustable from 0 to 100
- Collar Receiver Light for locating your dog at night
- Lock and Set Stimulation Safety Feature
- Simulation Boosting Mode Provides instant control when normal stimulations is ignored - great for emergency situations
- User Adjustable Boosting Levels from 1 to 60 Levels
- Completely Water Resistant
- Convertible from 1-Dog model (400) to 2-Dog model (402)

PACKAGE CONTENTS

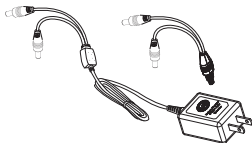
- Transmitter



- Collar Receiver with Strap
(402 Package includes
2 Receivers and straps)



- Battery Charger
(402 package contains
splitter cable)



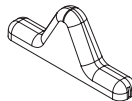
- Owner's Manual



- Extra Contact Points 3/4"



- Test Light



- Contact Point Tool

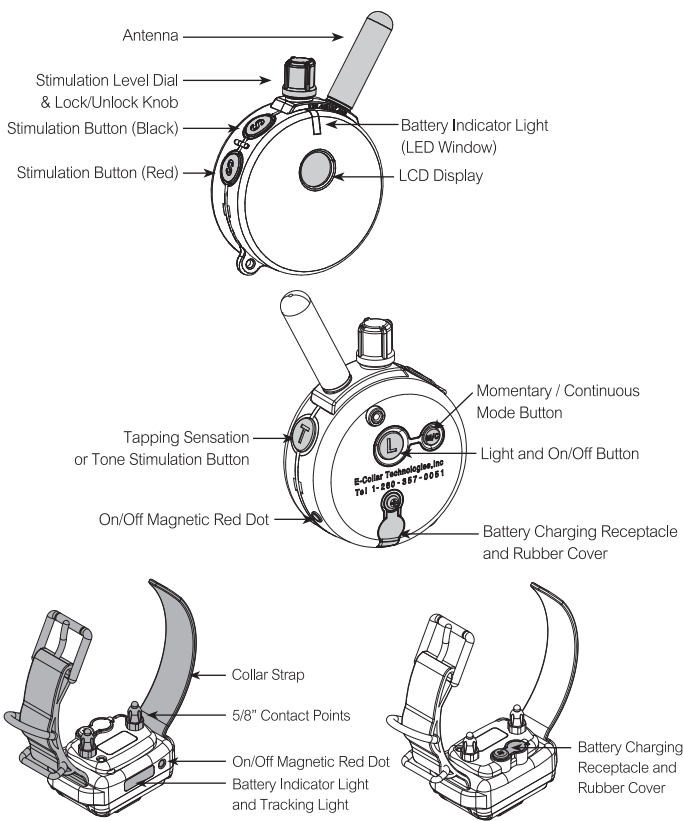


- Lanyard



06

DEVICE OPERATION



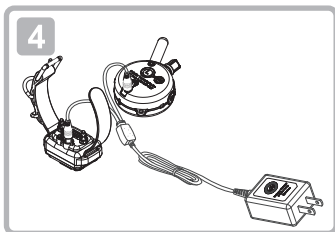
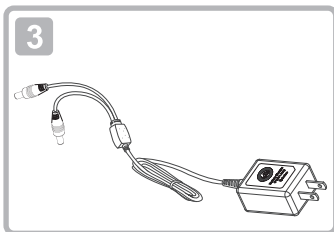
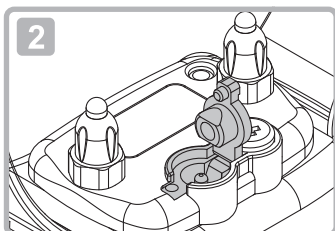
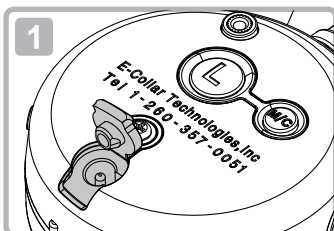
CHARGING THE BATTERIES

Indicator Light is blinking "Green" under normal operation.
 solid "Red" when stimulation is applied.
 blinking "Red" when recharging is required.

**Do not allow the batteries to get hot or be fully discharged,
 store at room temperature and 50% capacity charge,**

Transmitter Battery Charging
 Receptacle and Rubber Cover

Collar Receiver Battery Charging
 Receptacle and Rubber Cover



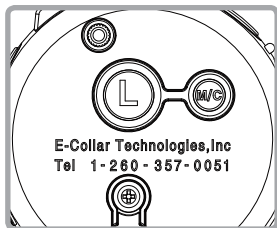
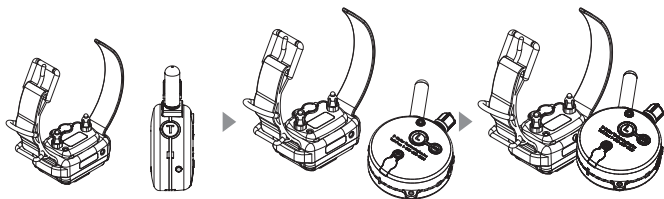
The indicator light will turn solid red during charge cycles and turn green if it is fully charged. (approximately 2 hours)

Your e-collar is equipped with Li-Polymer batteries that need specific attention to ensure their longevity. It is advisable to avoid fully discharging the battery. In the event of complete discharge, please recharge it promptly to prevent irreversible damage. Additionally, please keep the units away from excessive heat and cold temperatures.

08

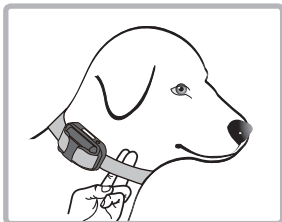
TURNING YOUR E-COLLAR ON/OFF

- To turn the Collar Receiver On or Off :
Place the small red dot on the Transmitter to the small red dot on the Collar Receiver.



- To turn the Transmitter On or Off :
Press the “L” button for more than 1 second.
If the Transmitter is turned on, a short press of the “L” button will activate the tracking light of the collar receiver. Press and hold for 2 seconds to turn Transmitter off.

CORRECTLY FITTING COLLAR



The collar should be adjusted to allow the “contact points” to have direct contact with the skin. You should be able to fit a couple of fingers between the collar strap and your dog's skin.

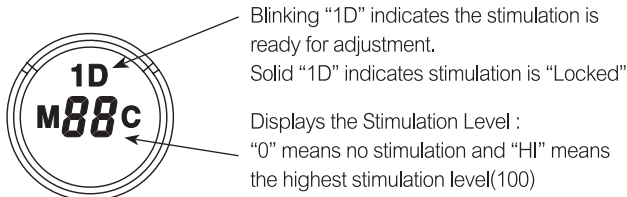
Too tight poses the risk of skin irritation and discomfort. Too loose and the contact points will not be able to administer the stimulation reliably and can cause skin irritation due to chafing. Short hair breeds may need the 3/8" microprobes offered as an accessory item, contact customer service for details. The optimal position for the collar receiver is on either side of the dog's windpipe. If the factory installed 5/8" contact points are not making good contact due to thick fur, see page 24 for changing contact points.

IMPORTANT NOTICE

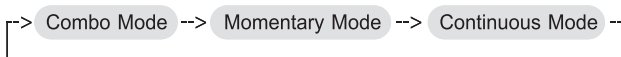
To prevent the occurrence of skin irritations the Collar Receiver should never be worn for more than 12 hours per day. Should your dog experience skin irritations from over exposure to the contact points remove the collar receiver unit immediately and stop using your e-collar until all skin irritations are completely healed. Antibiotic ointment will aid in the healing process. Some dog breeds have extra thick fur or extra short fur that requires special contact points. Please contact our customer service or visit www.ecollar.com for more information.

10

THE LCD DISPLAY DESCRIPTION



Momentary / Continuous Button "M/C"- The M/C Button on the backside of the transmitter allows the user to easily switch between the three stimulation modes. The function of stimulation buttons changes by mode.



To change the mode: Press and hold the M/C button for 2 seconds to enter change mode indicated by a beep. Then Press and release the M/C button to change from M (Momentary) to C (Continuous) to M+C (Combo – Momentary/Continuous) stopping on the desired mode.

Stimulation Button	Combo Mode	Momentary Mode	Continuous Mode
Display			
S (Black)	Momentary	Momentary	Continuous
S (Red)	Continuous	Momentary Booster	Continuous Booster
S(Black)+S(Red)	Momentary Booster	N/A	N/A
S(Red)+S(Black)	Continuous Booster	N/A	N/A
T	Tapping Sensation or Tone Stimulation		

BUTTON FUNCTIONS

Momentary Stimulation

Sends a single pulse of stimulation at the set level when you press stimulation button.

Continuous Stimulation

Sends pulses of stimulation for as long as the button is pressed, timing out after 10 seconds (this is a safety feature designed to prevent accidental over-stimulation of your dog). The stimulation can be increased or decreased while the button is being pressed.

Tapping Sensation

Vibration specifically designed to distract your dog, great for deaf dogs and stimulation sensitive dogs.

Tone followed by Stimulation (Pavlovian Conditioning)

After 1.2 seconds of tone, the collar will administer continuous stimulation for as long as the button is pressed (up to 10 seconds). Release before 1.2 seconds for tone only.

Stimulation Button S (Black)

- Sends momentary or continuous stimulation to the collar receiver based on the state of Momentary/Continuous Mode.

Stimulation Button S (Red)

- Sends momentary or continuous boosted stimulation.
- If stimulation level is 10, boosted stimulation sends [10 + boost level]
- The default value of the boosted level is 5, it can be adjusted to any value between 1 and 60. Smaller and more sensitive breeds should use levels 1 through 20, larger and/or more stubborn breeds may need a higher boost.

12

BUTTON FUNCTIONS

Boosting Stimulation in Combo Mode

Momentary Boosting is accomplished by first sending a momentary stimulation pulse “S (Black)” to the dog and then pressing “S (Red)” button without releasing “S (Black)” button. (PLEASE PRACTICE)

Continuous Boosting is accomplished by first administering continuous stimulation “S (Red)” to the dog and then pressing the “S (Black)” button without releasing the “S (Red)” button.

Tapping Sensation (Vibration) / Tone Stimulation “T”

Sends Tapping Sensation or Tone Stimulation to the collar receiver. (Default setting is tapping sensation).

To toggle between tapping sensation and tone stimulation, press “L” and “T” buttons simultaneously when the intensity level is “0”.

- Single beep and “A” icon indicates Tone followed by Stimulation.
- Double beeps and “T” icon indicates Tapping Sensation (Vibration).

Tapping Sensation ↔ Pavlovian Stimulation

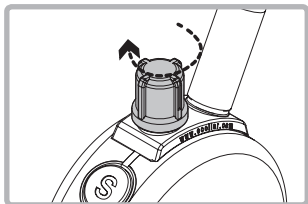
Light Button “L” (ON/OFF Center Button on Back)

Pressing “L” button will change the night tracking light mode.

OFF -> Flashing -> Solid -> OFF

Great for locating your dog after dark. (PLEASE PRACTICE)

HOW TO FIND THE PROPER STIMULATION LEVEL



Rotating clockwise increases the stimulation level, and rotating counter-clockwise lowers the stimulation level.

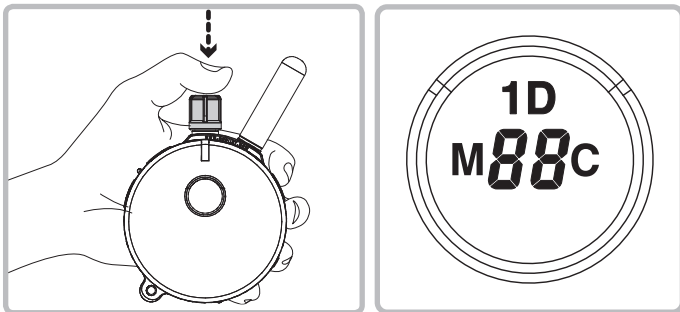
It is highly recommended that the user practices changing levels and modes before putting the collar receiver on a dog.

Setting the correct stimulation level for your dog is very important. To set your “conditioning” stimulation level, correctly put the collar receiver on your dog (see page 9 for instructions). Let the dog get used to the collar receiver for a couple of hours.

While watching your dog, turn the level to “0” and press the continuous stimulation button. Slowly turn the stimulation up at a rate of approximately 2-3 levels per second. When your dog first perceives the stimulation, usually between 5 and 20, release the button. This is your “conditioning” stimulation level. You may need to increase the “conditioning” level a few levels to get your dog to respond at first, some dogs are more stubborn and need more stimulation. The boosted level is typically 5 to 20 levels higher than the “conditioning” level.

14

LOCK/UNLOCK THE STIMULATION LEVEL



How to Lock/Unlock the Stimulation Level

Set the desired stimulation level and then press on the top of the stimulation dial until you see “1D” light up on the top portion of the LCD display. Flashing “1D” indicates unlocked stimulation and Solid “1D” indicates locked stimulation.

If the stimulation level does not change when you rotate the stimulation knob, you have successfully locked the stimulation level.

To unlock the stimulation level simply press the stimulation knob again and it will unlock the stimulation level.

HOW TO SET THE BOOST

Boosted Stimulation adds the set boost level to the stimulation level, great for those situations when your dog does not respond to the “conditioning” level. Determining the Boosted stimulation level is a little more difficult than stimulation level setting due to the wide differences in temperaments and stimulation tolerance among the many breeds of dogs. On average, it is normally 5 to 20 levels higher than the “conditioning” level. It is important to have it set high enough to get the desired response from your dog.

1. Change the mode to Momentary Mode.
(Press M/C button until “M” is displayed)
2. Change the intensity level to “0”.
3. Press S(Black) button for more than 5 seconds.
4. The intensity level will change from “0” to a flashing “1”.
5. Rotate the dial to the desired boost level (1 to 60).
6. Press S(Black) button again to save and exit the boost level changing mode.

16

LOST TRANSMITTER MODE

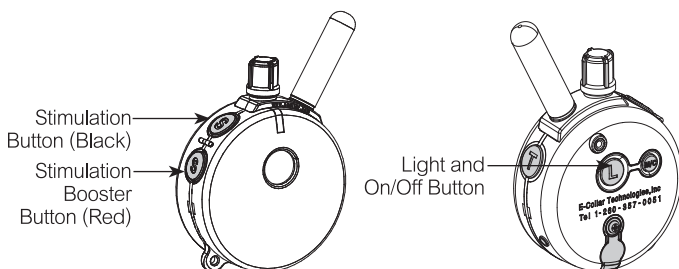
Your 400/402 E-Collar transmitter allows the user to activate a 6 hour timer. After 6 hours, the transmitter will begin to beep providing the ability to locate the transmitter. The LCD displays “AL” during beeping.

Lost transmitter mode is activated by simultaneously pressing the Light (L) button and the stimulation button (Black “S”) when the intensity level is set to zero. Three short beeps will sound confirming the activation of the locator timer.

Lost transmitter mode is deactivated by simultaneously pressing the Light (L) button and the red stimulation button (Red “S”) when the intensity level is set to zero. Two short beeps will sound confirming the deactivation of the locator timer.

Lost transmitter mode will be cancelled whenever the transmitter is turned off. Make sure to reactivate lost transmitter mode when you turn off transmitter.

It is important to activate the Lost Transmitter mode before embarking on a hike or engaging in activities where misplacing the transmitter is a possibility.



REPLACE/ADD COLLAR

Occasionally, it is necessary to pair/sync a transmitter to a collar receiver, the following procedure will accomplish this:

1. Turn on the Transmitter
2. Turn intensity dial to "0"
3. Make sure the collar receiver is turned off.
4. Put the Transmitter's Red Dot against the Collar Receiver's Red Dot for more than 5 seconds, green light on Receiver will flash rapidly
5. Immediately after, press and hold Black "S" Button followed by the Red "S" Button until you hear confirmation sound from Collar Receiver.

HOW TO CHANGE THE TRANSMITTER TO A 2 DOG TRANSMITTER

The button functions will change. The changes are described on pages 18 through 22. You can change the transmitter back to the 1Dog system (400) at any time.

1. Turn on the Transmitter.
2. Press the Red "S" followed by the Black "S" followed by the "T" Button simultaneously for more than 2 seconds until you hear the confirmation beeps.
3. Repeat step 2 to return back to a 1 dog system.

ADD/REPLACE COLLAR FOR SECOND DOG

1. Turn on the Transmitter
2. Turn intensity dial to "0"
3. Make sure Receiver is turned off.
4. Put the Transmitter's Red Dot against the Collar Receiver's Red Dot for more than 5 seconds, green light on Receiver will flash rapidly.
5. Immediately after, press and hold Red "S" Button followed by the Black "S" Button until you hear confirmation sound from Collar Receiver.

402 LCD DESCRIPTION



Blinking 1D or 2D icons indicates the stimulation level is ready for adjustment.
 Solid icon indicates stimulation locked.
 Displays the Stimulation Level : "0" means no stimulation and "HI" means the highest stimulation level(100)

Momentary / Continuous Button "M/C"- M/C Button on the backside of the transmitter allows the user to easily switch between two stimulation modes either momentary or continuous.

Button	Stimulation (1D or 2D)		TS(Vibration) or Tone Stimulation
M/C Button	Momentary Mode	Continuous Mode	N/A
Display			
S (Black)	Dog 1 Momentary	Dog 1 Continuous	Dog 1 TS (Vib) or Tone Stimulation
S (Black) + S (Red)	Dog 1 Momentary Booster	Dog 1 Continuous Booster	N/A
S (Red)	Dog 2 Momentary	Dog 2 Continuous	Dog 2 TS (Vib) or Tone Stimulation
S (Red) + S (Black)	Dog 2 Momentary Booster	Dog 2 Continuous Booster	N/A
L	"L" in Dog 1 set mode will control Dog 1 light "L" in Dog 2 set mode will control Dog 2 light		N/A

402 BUTTON FUNCTIONS

Mode Button “T”

Mode button allows the user to change modes as shown in the diagram



1 Dog Set Mode - LCD display shows 1D

2 Dog Set Mode - LCD display shows 2D

Tapping Sensation or Tone Stimulation- LCD display a T

Light Button (On Back) “L”

When the “L” button is pressed, “L” will be displayed.

If you press L while in Dog 1 Mode, Dog 1’s Light will activate.

If you press L while in Dog 2 Mode, Dog 2’s Light will activate.

Tracking Light will Cycle: **Flashing** -> **Solid** -> **OFF** when L is pressed.

Tapping Sensation / Tone and Pavlovian Stimulation “T”

To toggle between tapping sensation and pavlovian stimulation press “L” and “T” buttons simultaneously for 2 seconds when the intensity level is “0”.

- Single beep and “A” icon indicates pavlovian stimulation.
- Two beeps and “T” icon indicates tapping sensation.

402 BUTTON FUNCTIONS

Momentary stimulation

Sends a single pulse of stimulation at the set level when you press the stimulation button.

Continuous stimulation

Sends continuous pulses as long as the stimulation button is pressed, timing out after 10 seconds (this is a safety feature designed to prevent accidental over-stimulation of your dog). The stimulation can be increased or decreased while the button is being pressed.

Tapping Sensation

Vibration specifically designed to distract your dog, great for deaf dogs and stimulation sensitive dogs.

Tone followed by Stimulation (Pavlovian Conditioning)

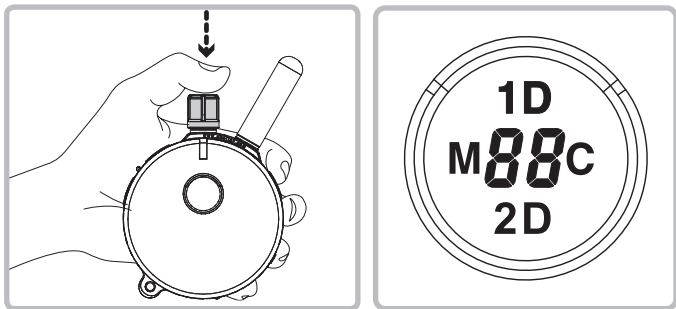
After 1.2 seconds of tone, the collar will send continuous stimulation for as long as the button is pressed (up to 10 seconds). Release before 1.2 seconds for tone only.

Boosting Stimulation

Sends boosted stimulation until you release buttons.

To boost Dog 1, press “S” (Black) button followed by “S” (Red) button
To boost Dog 2, press “S” (Red) button followed by “S” (Black) button

HOW TO LOCK/UNLOCK THE STIMULATION LEVEL



How to Lock/Unlock the Stimulation Level

See page 13 for help finding the proper stimulation level.

You can lock each dog to a different level.

In 1Dog Mode, if you see “1D” icon is blinking (unlocked)

Set the desired stimulation level and then press the stimulation dial until you see “1D” icon stop blinking.

In 2Dog Mode, if you see “2D” icon is blinking (unlocked)

Set the desired stimulation level and then press the stimulation dial until you see “2D” icon stop blinking.

If the stimulation level does not change when you rotate the stimulation dial, you have successfully locked the stimulation level.

To unlock the stimulation level simply press the stimulation knob again at 1Dog/2Dog mode and it will unlock the stimulation level.

402 BOOST LEVEL SETUP

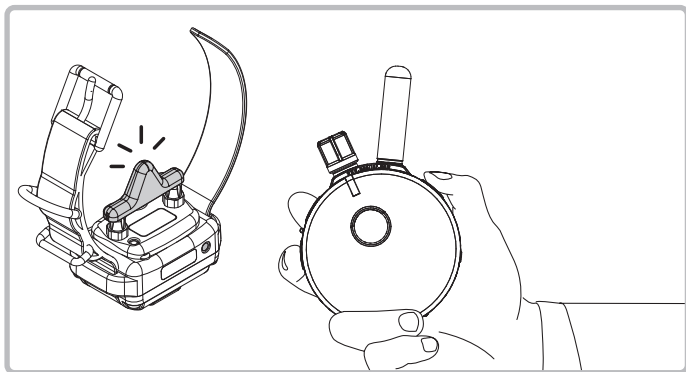
Boosted Stimulation adds the set boost level to the stimulation level, great for those situations when your dog does not respond to the “conditioning” level. Determining the Boosted stimulation level is a little more difficult than stimulation level setting due to the wide differences in temperaments and stimulation tolerance among the many breeds of dogs. On average, it is normally 5 to 20 levels higher than the “conditioning” level. It is important to have it set high enough to get the desired response from your dog.

How to Setup Boost Level for first dog

1. Change the mode to Momentary Mode
(Press M/C button until “M” is displayed)
2. Change the intensity level to “0”
3. Press S(Black) button for more than 5 seconds
4. The intensity level will change 0 to 1 and start to blink.
5. Rotate the dial to change the boost level (up to 60).
6. Press S(Black) button again to save and exit from Boost Level Change Mode. If any other button is pressed or idle for 20 sec, Boost Level Change Mode will be cancelled.

If you want to change boost level for dog 2,
Press S(Red) instead of S(Black) on step #3, and #6

TESTING YOUR E-COLLAR



If you need to check your unit, hold the test light against the contact points on the collar receiver. This test will let you know that the collar receiver is generating the proper sensation to the dog, it should brighten in a smooth fashion as the dial is turned up.

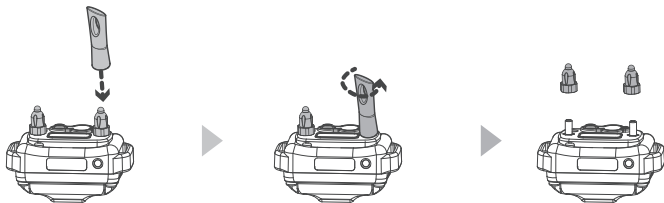
Some people find it easier to hold the collar receiver on their forearm while slowly turning the stimulation up using the continuous mode, typically as humans we will begin to feel the simulation around a level 8 to 25 depending on the dryness of the skin.

Feel free to contact us if you have need help, 1-260-357-0051.

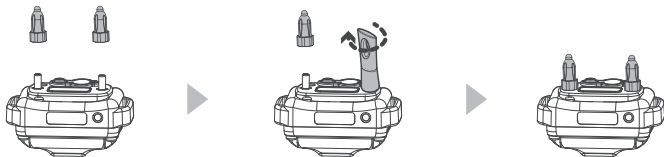
24

REPLACING THE CONTACT POINTS

The standard 5/8" contact points are used for most dogs. Thicker fur breeds require the longer 3/4" contact points. Replace the 5/8" contact points by following the instructions below using the enclosed contact point tool.



1. Loosen both contact points by rotating the contact point counter-clockwise using the contact point tool.



2. Install the 3/4" contact points onto the bolt and tighten the contact points by rotating them clockwise with the contact point tool.

* For short haired breeds such as boxers, dachshund, pit bulls, etc, and thick fur breeds please visit our website or contact us to inquire about special contact points for your dog.

IMPORTANT TRAINING TIPS

E-Collars can be utilized to reinforce commands that your dog already knows or as a learning tool when combined with leash pressure. It should be noted that they are not intended to replace basic leash obedience training, but rather to enhance your ability to communicate with your dog. For optimal outcomes, it is recommended to utilize the minimal amount of stimulation necessary to capture your dog's attention. A composed and consistent approach to training will consistently yield better long-term results. It is strongly advised that owners of aggressive dogs consult a professional trainer for evaluation prior to incorporating an e-collar. Various e-collar training techniques are recommended by different professional trainers. We believe that as the owner, you are best equipped to determine the most effective technique for your dog. For first-time users, we suggest immersing yourself in learning about the proper techniques or seeking the guidance of a professional e-collar trainer. The method employed in initially introducing the e-collar is crucial to the success of the training.

You can find helpful training videos by searching for E-Collar Technologies on YouTube and subscribing to our channel, as we regularly post new content. Additionally, please consider "Liking" our Facebook page to receive further training advice and connect with other e-collar users.

**Good Luck with your training from your friends at
E-Collar Technologies**

TROUBLESHOOTING

? My Receiver / Transmitter is not turning on

- A Make sure the collar receiver is fully charged. Collar receiver light should turn green when the battery is connected to the charger.

? My Receiver is not responding

- A Check Receiver's indicator light is blinking green and Transmitter LCD is on. Check to make sure the collar receiver's indicator light is red when the stimulation button is pressed.

- A Try pairing / syncing the transmitter to the receiver. (Page 17)

? The receiver doesn't seem to provide stimulation to the dog

- A Remove Contact points from Receiver. Connect Test Light to the receiver and test for stimulation. If the test light is blinking, receiver is providing stimulation.

? Max range of device has been decreased

- A Check Transmitter's battery condition. Working range decreases when the battery level is low.
Keep your fingers from touching the antenna. See the bottom of page 8 for the proper technique to maximize range.

? You cannot change the stimulation level for of the remote

- A Make sure 1D or 2D on transmitter LCD is blinking. If 1D or 2D icons are solid, you cannot change stimulation. You can unlock the stimulation at any time by pressing the stimulation knob for 1 second.

CONTACT US FOR EXPERT HELP WITH YOUR E-COLLAR

TWO YEAR WARRANTY

To register your product, kindly visit our website at www.ecollar.com. Click on the warranty registration link and complete the necessary information. We kindly ask that you register your product within 30 days of your purchase. If you are unable to access a computer, please feel free to contact one of our dedicated customer service representatives at 1-260-357-0051. They will be happy to assist you in registering your product. If, for any reason, your product is not registered properly, proof of purchase will not be required to obtain warranty coverage. We will be able to estimate your purchase date based on the serial number. It is important to note that misuse, improper maintenance, lost or stolen units, and dog damages are not covered under the manufacturer's warranty. We strive for your complete satisfaction and aim to provide exceptional service.

**“Making Bad Dogs Good
and Good Dogs Better!”**

28

ACCESSORIES

- Titanium Hypo-Allergenic Contact Pints



- Thick Fur Contact Points



- Short Point Comfort Pads



- Magnetic AnyWear Clip



- Ultra Wing Contact Point Comfort Pads



- Gear Keeper



- Bungee Collar



- Quick Snap Bungee Collar



www.ecollar.com

SAFETY AND GENERAL INFORMATION

- The 400/402 Education Collar complies with all National and International Standards and Guidelines for human exposure to radio frequency electromagnetic energy.
- Nearly all electronic devices are susceptible to electromagnetic interference (EMI) if inadequately shielded or designed without precautions to EMI.
- 400/402 e-collar transmitters manufactured by E-Collar Technologies, Inc. comply with Article 15 of the FCC rules and operate under part 95 of FCC regulations.
- Operating Frequency Band is 27.095 MHz.

IMPORTANT NOTICE

1. To avoid Electromagnetic Interference and/or compatibility conflicts, please turn off your transmitter and collar receiver in any facility where posted notices instruct you to do so. Never use your equipment in close proximity of a Hospital or Health Care Facility or enter the facility without turning off both units.
2. An FCC license is not needed to operate 400/402 remote e-collar transmitters. However, any change or modification made to the transmitter, including the supplied antenna, without the expressed written approval of E-Collar Technologies, Inc. could void your authority to operate.

IMPORTANT NOTICE

NOTICE

Possible Metal Allergy

Dogs vary in sensitivity and may develop symptoms of a metal allergy.

Which may include irritation, redness, hair loss, sores, etc.

Please rotate collar receiver from side to side daily to check for allergies.

If allergies occur, hypoallergenic contact points are available for purchase

at www.ecollar.com or 260-357-0051

NOTICE TO PREVENT WATER DAMAGE

If Receiver is exposed to water on a regular basis, tighten screws once or twice a month depending on the frequency of water exposure.

Please make sure screws are snug but not overly tight.

This will help prevent internal water damage.

ITEM SHOULD BE PLACED OUT OF THE REACH OF CHILDREN

This product is not meant to be used by individuals (including children) with limited physical, sensory, or cognitive abilities, or those lacking expertise and understanding, unless they are under the supervision or guidance of a person responsible for their safety. This also applies to the cleaning and upkeep of the item.

The item should exclusively be used with the power supply (charger) provided with the product.

TECHNICAL SPECIFICATIONS

Transmitting and receiving standard frequency	27 Mhz
Operating range (maximum effective range of open space)	3/4 mile range
Degree of protection	IP68
Transmitter battery (Li_Po)	720mAh
Collar Receiver battery (Li_Po)	300mAh
Battery voltage	3.7V ~ 4.2V
Charging voltage	5V
Time for battery fully charged	1-2 Hours
Collar Receiver Battery Life (Standby mode)	24 ~ 48 Hours
Transmitter Battery Life (Standby mode)	Battery last more then 1 week
Working temperature	0 ~ 55°C
Storage temperature / Humidity	-40 ~ 85 °C / 30%
<p>"Risk of fire or explosion if the battery is replaced by an incorrect type"</p> <p>"Use an adapter that satisfies PS2 or LPS"</p>	



E-Collar Technologies, Inc.

2120 Forrest Park Drive
Garrett, IN 46738-1887
1-260-357-0051 (US & International)

sales@ecollar.com
www.ecollar.com
customerservice@ecollar.com



Thank you for Supporting American Workers

Copyright 2015 E-Collar Technologies, Inc.

All Rights Reserved.