



# **Easy Educator EZ-900/902**

**Owner's Manual**

**E-Collar Technologies, Inc.**

# Welcome to the World of E-Collar Training

---

Congratulations on your purchase of this E-Collar 900 Series training system. We are confident that the results obtained using e-collar training system will exceed your expectations. We have taken great care to provide ample safety features to assure pleasant experience for you and your dog.

Use of lowest level of stimulation and a patient heart is essential for your success. Soft leash pressure and low level stimulation will produce the best results, it is critical for your dog to understand the sensation from the stimulation is not something to be feared but recognized as communicative sensation.

The use of the training system should be part of an overall training program. We recommend spending time to accumulate yourself to the features and functions of 900 Series before putting collar on your dog. Please subscribe our Youtube and Facebook pages to obtain the proper education on the use of e-collars.

Good luck with your training, please feel free to contact us at anytime for assistance.

\* This guide will assist you with basic functions, programming features and contents of the 900 Series.

Additional information and help is available on [www.ecollar.com](http://www.ecollar.com) and by e-mailing [customerservice@ecollar.com](mailto:customerservice@ecollar.com).

Please contact our customer service department, 8 AM to 8 PM E.S.T., 1-855-326-5527 or (260) 357-0051.



# TABLE OF CONTENTS

---

## Preparing Device

- Important Notice .....	3
- Package Contents .....	4
- Device Composition .....	5
- How To Charge Devices .....	6
- How to Connect the Charger .....	6
- Turning ON/OFF the 900 Series .....	7
- Correctly Fitting the Collar .....	8
- How to change the Contact points .....	9

## How to use Device

- LCD Display Description .....	10
- EZ900 Default Button Preset & Usage .....	11
- How to Find Proper Stimulation Level .....	11
- Program Stimulation Buttons .....	12
- How to Lock & Unlock Stimulation Level .....	12
- Instant Stimulation .....	13
- Boost Level setup .....	13
- Night Tracking Light .....	14
- Lost Transmitter .....	14
- Two Button Booster .....	15
- How to Replace for New Receiver by Pairing .....	15

## EZ-902

- 2 Dog System .....	16
- How to Add & Replace for 2Dog Receiver .....	16
- EZ-902 Default Button Preset & Usage .....	17
- How to Find Proper Stimulation Level .....	17
- EZ-902 Program Stimulation Buttons .....	18
- How to Lock & Unlock Stimulation Level .....	18

## Additional Device Information

- Simple Chart for EZ900 Series Function .....	19
- Important Training Tip .....	20
- Additional Contact Points .....	20
- Troubleshooting .....	21
- USB Interface Toop .....	22
- Safety and General Information .....	23
- Warranty and Registration .....	24
- Accessories .....	25

## Important Notice

---

### ***Caution***

This product is intended to be used on DOGS ONLY.

E-Collar Technologies, Inc. is not responsible for any misuse of this product including damages from dog bites and lost items. Seek an evaluation by professional trainer before use for aggressive dogs. It is not uncommon for aggressive dogs to associate the stimulation with the handler and take action against the handler. Sometimes dogs put under e-collar pressure during a fight can exhibit redirected aggression and become more aggressive.

The use of high levels of stimulation should only be used as a last resort and in life-threatening situations.

To prevent giving stimulation to your dog by accident, keep the stimulation level below 5 while not in use.

The range of 900 Series may vary according to terrain, weather condition, greens, or power lines as well as radio wave from other device.

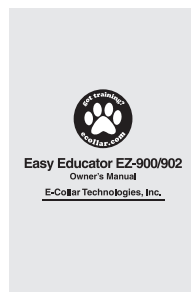
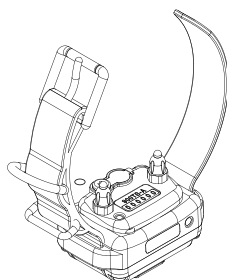
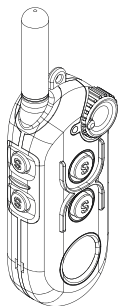
E-Collar 900 Series provide USB interface tool for easier setup by connecting with PC. Most features can be changed without using the computer, but maximum stimulation setting, types of vibration and types of tone are only changeable by the computer. The tool is available for download at <http://www.ecollar.com>

# 04

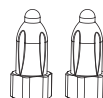
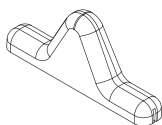
## Package Contents

---

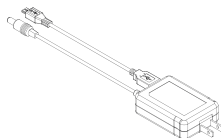
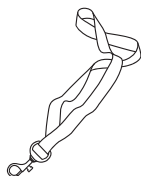
- Ergonomic Transmitter
- Waterproof Collar Receiver + High Quality Biothane Strap
- Owner's Manual



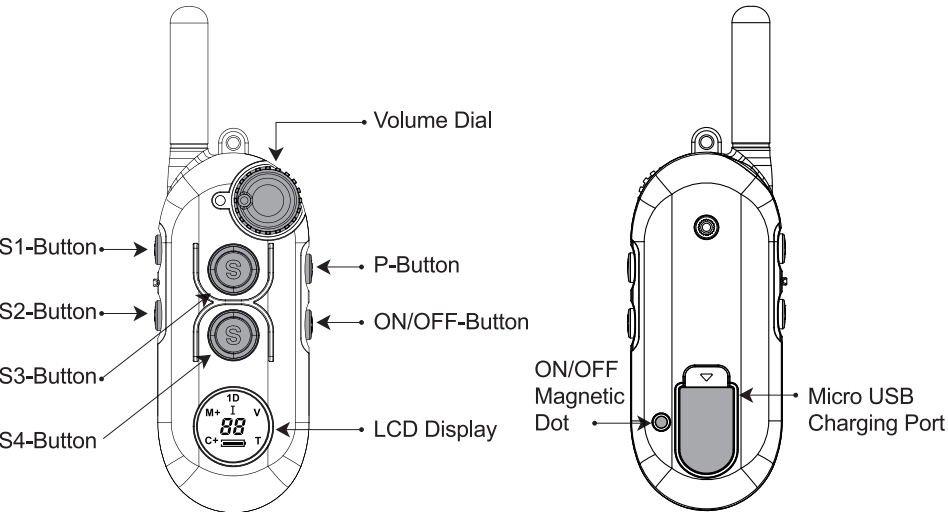
- Test Light
- Contact Point Tool
- 5/8" and 3/4" Contact Points



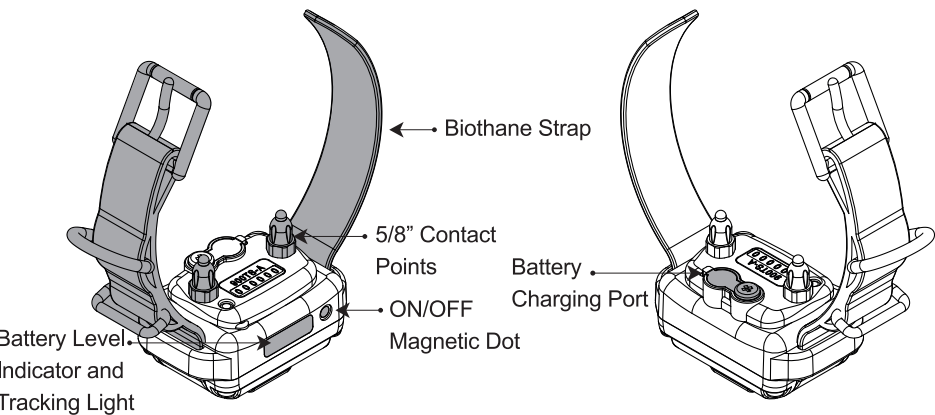
- Lanyard
- Battery Charger
- Metal Belt Clip



# Device Composition



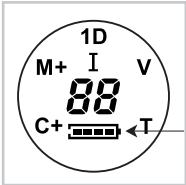
S1, S2, S3, S4	Programmable Stimulation Button
P-Button	Lock/Unlock Button
ON/OFF Button	Turn Device ON/OFF
Volume Dial	Adjust Stimulation Level



# 06

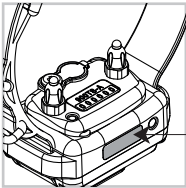
## How to Charge Devices

**Important Notice :** Take off the charger from when device is fully charged for longer battery life



### Transmitter :

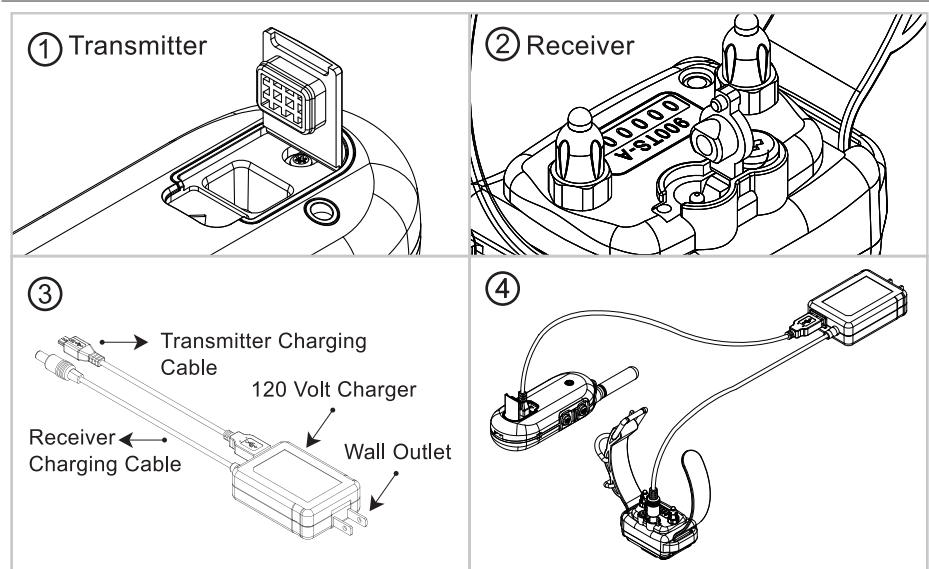
The battery life is displayed on the LCD.



### Receiver :

- Indicator light is blinking “Green” when battery level is okay.
- Indicator light is “Amber” when battery level below 30%.
- Indicator light is “Red” when battery is very low.

## How to Connect the Charger

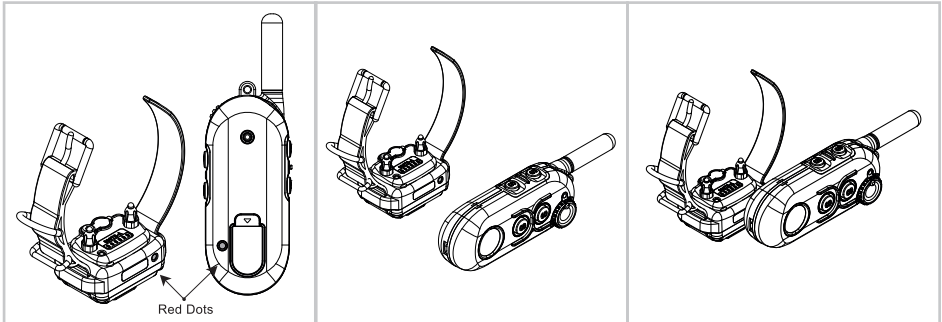


Each Unit can be charged separately or together.  
Indicator light is red during charging and turn green when it is fully charged.

# Turning ON/OFF the 900 Series

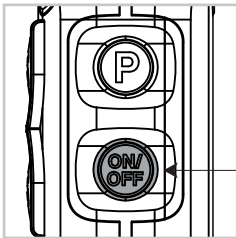
## Turning Receiver ON and OFF

COLLAR RECEIVER turn ON/OFF by using magnet technology.



Put red dot on rear of Transmitter close to the red dot on the receiver.

## Turning Transmitter ON and OFF



Press the "ON/OFF Button" for more than 1

## Position of Transmitter

To obtain the maximum range hold the transmitter like the torch on the Statue of Liberty. Keep the antenna away from your body or fingers at all times, touching the antenna will greatly reduce the range.



[Long Range]



[Medium Range]



[Short Range]

# 08

## Correctly Fitting the Collar

---

**Proper fit and position of the Receiver is important for better training efficiency**

### Caution

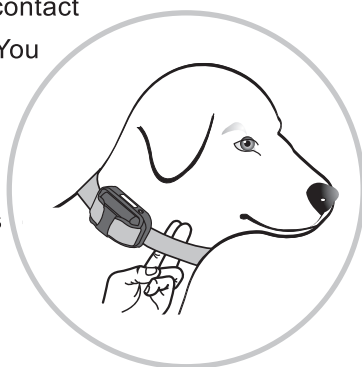
To prevent the occurrence of skin irritations, the collar receiver should not be worn for more than 10-12 hours per day and should be rotated every few hours.

Dogs should never sleep with it on overnight or in their kennel.

The dogs skin needs to be conditioned to the contact points this is accomplished by starting out with 1 to 2 hours and slowly working up to the absolute maximum of 12 hours per day.

Should your dog experience skin irritations from over exposure to the contact points or allergic reaction to the nickel remove the collar receiver unit immediately and stop using your e-collar until the skin irritations are totally healed. Antibiotic ointment is suggested to aid in the healing process and prevent infections, a visit to your Veterinarian may be required should any open sores become infected.

The collar should be adjusted to allow the “contact points” to have direct contact with the skin. You should be able to fit a couple of fingers between the collar strap and your dog. Too tight poses the risk of skin irritation and discomfort. Too loose and the contact points will not be able to administer the stimulation reliably and can cause skin irritation due to chafing. A nice snug fit is best.



## Correctly Fitting the Collar

---

always seat the collar receiver by giving it a little wiggle to remove any hair that is between the contact points and the dog's skin.

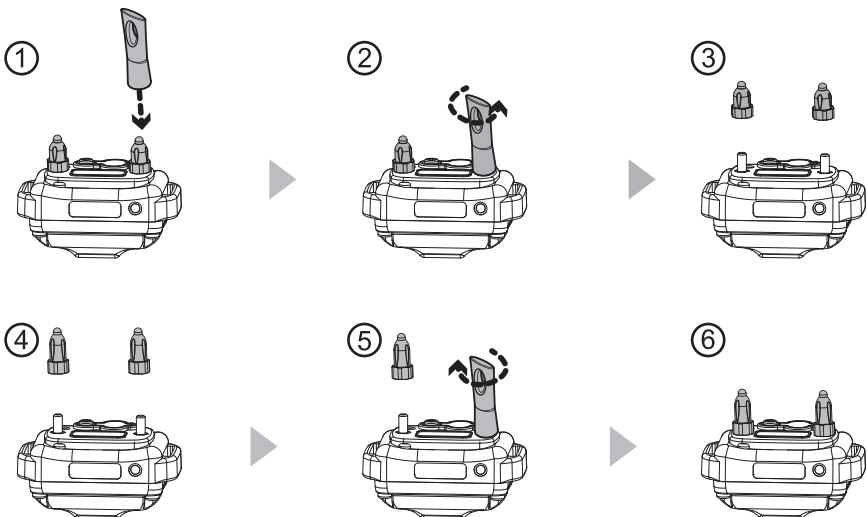
The optimal position for the collar receiver is on either side of the dog's windpipe in the 2 to 5 or the 7 to 10 o'clock position; most dogs don't like it on their windpipes.

Periodically switching positions during a full day of e-collar use is good practice and can help prevent irritations from occurring. Inspecting the area is very important to assure your dog is handling the pressure from the contact points.

## How to Change the Contact Points

---

If the 5/8" factory installed contact points do not make good contact due to long hair, you can easily change to 3/4" contact points with the contact point tool. Follow diagrams step by step. Very long and thick coats require special contact point, available for purchase on [ecollar.com](http://ecollar.com)

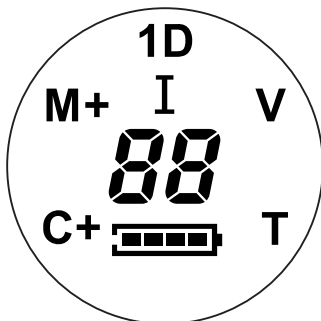




# 10

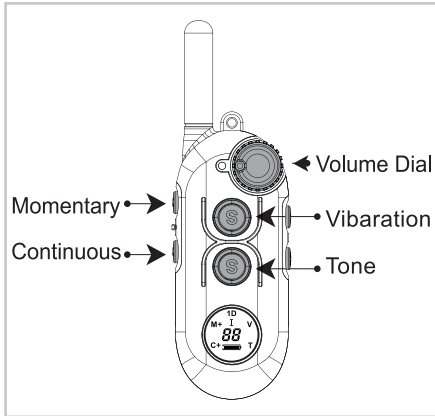
## LCD Display Description

---



Icon	Description	Action
<b>M</b>	Momentary Stimulation	Send Single Stimulation in short duration
<b>M+</b>	Momentary Boost Stimulation	Send boosted single stimulation in short duration
<b>C</b>	Continuous Stimulation	Sends stimulation continuously up to 10 seconds.
<b>C+</b>	Continuous Boost Stimulation	Sends stimulation countinuously up to 10 seconds.
<b>I</b>	Instant Stimulation Mode	Gives Continuous Stimulation up to 45 seconds follows by Volume Dial Volume Dial must be 0 to activate
<b>V</b>	Vibration	Vibrate up to 30 seconds
<b>T</b>	Tone	Flat sound up to 30 seconds

## EZ-900 Default Button Preset & Usage



**Important Notice:** Four default stimulation modes are ready to use when you receive the device. You can give these stimulation to dog by pressing button follow by the left diagram. **Always start the Volume Dial from the low level.**

See LCD Display Description for how stimulation works and understand before use it for your dog.

## How to Find Proper Stimulation Level

900 series supports 100 different stimulation levels.

Getting to know proper stimulation for your dog is the key of the succesful training. This is simple guide to find out proper stimulation level, there is more detail training guide on Page 18.

**Important Notice:** Rotate Volume Dial counter-clockwise to increase stimulation level, rotate Volume Dial clockwise to decrease stimulation level.

1. Put the collar receiver on your dog, let him/her get used to the receiver
2. Turn the Volume Dial to "0", press Continuous stimulation button (S2) to activate Instant stimulation mode (this will sends stimulation until mode off). Increase the level one by one and repeat until dog makes any indication of noticing the stimulation; this could be an eye twitch or scratching the collar receiver. Most dogs respons between 5 and 20. Remember the stimulation level that your dog respond, this is proper intensity level for your dog.
3. Press S2 button again to turn off Instant stimulation mode.

**Caution:** If your dog react too hard from stimulation or seems erratic,  
TURN OFF STIMULATION IMMEDIATLY

# 12

## Program Stimulation Buttons

You can Program any stimulation mode to S1, S2, S3 and S4 Buttons.

Follow instruction is example of change the stimulation mode of S1 button

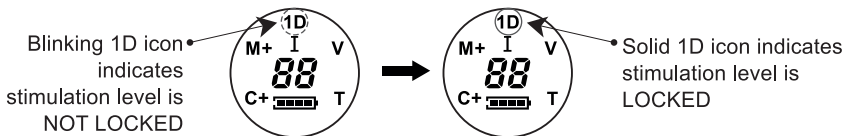
1. Press and hold P button and press S1 button to check current mode.  
You can see the current mode until release P button.
2. While pressing P button, press S1 button repeatedly to change mode.
3. Stimulation mode will change as follow :



4. Repeat step 1 to 3 to program other button.

## How to Lock & Unlock Stimulation Level

Lock the stimulation level to protect from unexpected high level stimulation.



### How to LOCK

1. When **1D icon** is blinking, use volume dial to change stimulation level.
2. Press P button until **1D icon** on LCD changes blinking to solid.

### How to UNLOCK

1. When **1D icon** is solid,
2. Press P button until **1D icon** on LCD changes solid to blinking

**Important Notice:** When Stimulation is locked, Stimulation level will not change even though you change the Volume Dial

## Instant Stimulation

---

Instant Stimulation gives Stimulation continuously up to 45 seconds follows by Volume Dial. Volume Dial must be 0 to activate Instant Stimulation level.

**Caution : DO NOT FORGET YOUR DOG GETS STIMULATION EVERY SECOND UNTIL INSTANT STIMULATION TURN OFF.**

1. Set continuous stimulation on any Stimulation Button.
2. Turn Volume Dial to 0 to activate (Require).
3. Press continuous Stimulation Button at #1, You will see [ **On** ] icon.  
Turn Volume Dial for starting stimulation.
4. Stimulation will automatically shut down in 45 seconds.  
Change stimulation level to 0 level will reset the 45 seconds safety timer.
5. Press any Stimulation Button to turn off Instant Stimulation.

## Boost Level Setup

---

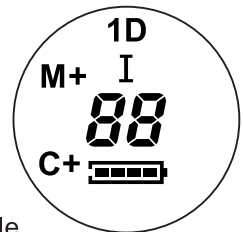
Boosted stimulation gives stronger than regular stimulation.

For example, when stimulation level is 25 and boost level is 5.

Momentary Boosted Stimulation (M+) gives 30 level stimulation. (25 + 5)

Default Boost Level is 5.

1. Set momentary stimulation on any Stimulation Button.
2. Turn Volume Dial to 0
3. Press momentary Stimulation Button at #1  
until M+ C+ icons on LCD
4. Change to desire boost level with Volume Dial.
5. Press same button as #1 to save&exit from setup mode.



For EZ902, Each dog can have different boost level.

At Step#1, To change 1D boost level, set S1 or S3 as Momentary

To change 2D boost level, set S2 or S4 as Momentary

## Night Tracking Light

---

Night Tracking Light provides bright light from the receiver.

This feature provides bright vision around your dog and shows where your dog is heading to.

Press P button will change Receiver light status.

**OFF → Blinking → Solid → OFF**

### ***Important Notice:***

**Using this feature cause spend Receiver's battery more than usual.**

## Lost Transmitter

---

Lost Transmitter is alarm feature, which prevents lost of transmitter.

If you activate Lost Transmitter feature, device will make a high tone sound after 6 hours.

1. Turn Volume Dial to 0, and press [ON/OFF + P] to activate
2. Single short beep and [ **On** ] on LCD confirm the activation.
3. Press [ON/OFF + P] to deactivate. Two short beeps confirm deactivate.

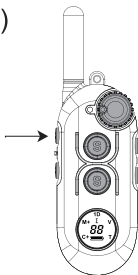
## Two Button Boost

To send boosted stimulation. Press two button combination

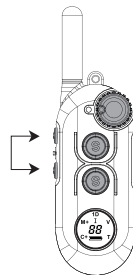
**Important Notice :** This feature only support for Momentary and Continuous.  
**There is No vibration boost or tone boost.**

1. Press Stimulation Button either Momentary or Continuous
2. Before you release stimulation button, press above or beneath Stimulation Button simultaneously for additional boosted stimulation

Exmample)



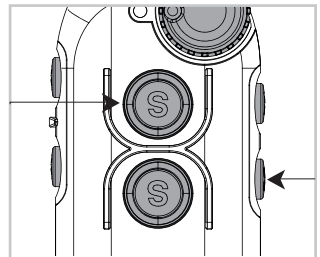
S1 - Momentary



S1 + S2 simultaneously  
for Momentary Boost stimulation

## How to replace for new Receiver by Pairing

1. Make sure the Receiver is turned off.
2. Change the Volume Dial to 0
3. Put Transmitter's red dot on Receiver's red dot for more than 5 seconds.
4. If Indicator Light on receiver rapidly blinking with green color, press [ON/OFF + S3] to complete pairing.
5. You will hear confirming sound.

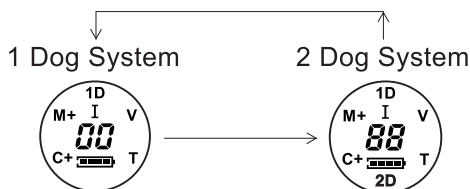


# 16

## 2 Dog System

900 Series supports multi dog system, which is expandable up to 2 dogs.  
Press ON/OFF button + S1 button simultaneously to change Dog System.

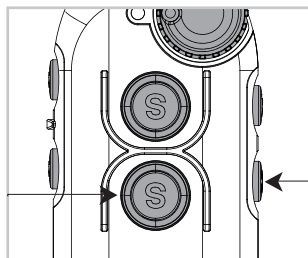
1. Change Volume Dia to 0,
2. Press [ON/OFF + S3 + S4] simultaneously to change to EZ902  
Press [ON/OFF + S1 + S2] simulataneously to go back to EZ900



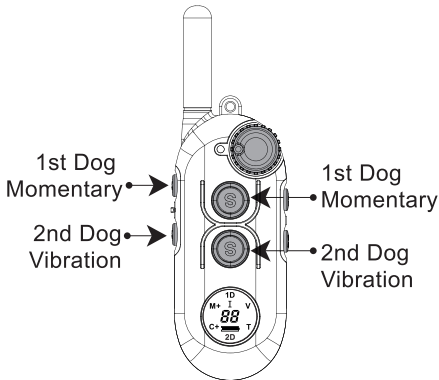
Stimulation Buttons	Stimulation buttons for each Dog System	
	1 Dog System	2 Dog System
S1-Button	Dog 1	Dog 1
S2-Button	Dog 1	Dog 2
S3-Button	Dog 1	Dog 1
S4-Button	Dog 1	Dog 2

## How to Add & Replace for 2Dog Receiver

1. Make sure the Receiver is turned off.
2. Change the Volume Dial to 0
3. Put Transmitter's red dot on Receiver's red dot for more than 5 seconds.
4. If Indicator Light on receiver rapidly blinking with green color, press [ON/OFF + S4] to complete pairing.
5. You will hear confirming sound.



## EZ-902 Default Button Preset & Usage



**Important Notice:** Four default stimulation modes are ready to use when you receive the device. You can give these stimulation to dog by pressing button follow by the left diagram. Always start the Volume Dial from the low level. See LCD Display Description for how stimulation works and understand before use it for your dog.

PAGE 13-15 includes EZ902 Functions.

## How to Find Proper Stimulation Level

900 series supports 100 different stimulation levels.

Getting to know proper stimulation for your dog is the key of the succesful training. This is simple guide to find out proper stimulation level.

**Important Notice :** Rotate Volume Dial counter-clockwise to increase stimulation level, rotate Volume Dial clockwise to decrease stimulation level.

1. Put the collar receiver on your dog, let him/her get used to the receiver
2. Change one of Stimulation Button to Continuous (Page 18).
3. Turn the Volume Dial to "0", press Continuous stimulation button to activate Instant stimulation mode (this will sends stimulation until mode off). Increase the level one by one and repeat until dog makes any indication of noticing the stimulation; this could be an eye twitch or scratching the collar receiver. Most dogs respond between 5 and 20. Remember the stimulation level that your dog respond, this is proper intensity level for your dog.
4. Press continuous button again to turn off Instant stimulation mode.

**Caution: If your dog react too hard from stimulation or seems erratic, TURN OFF STIMULATION IMMEDIATLY.**



# 18

## EZ-902 Program Stimulation Buttons

You can Program any stimulation mode to S1, S2, S3 and S4 Buttons.

Change modes of S1 and S3 for 1D, change S2 and S4 for 2D (Page 16)

Follow instruction is example of change the stimulation mode of S1 button

1. Press and hold P button and press S1 button to check current mode.

You can see the current mode until release P button.

2. While pressing P button, press S1 button repeatedly to change mode.

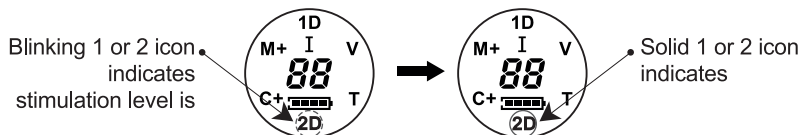
3. Stimulation mode will change as follow :



4. Repeat step 1 to 3 to program other button.

## How to Lock & Unlock Stimulation Level

Lock the stimulation level to protect from unexpected high level stimulation.



How to LOCK

1. When 1 or 2 icon is blinking, use volume dial to change stimulation level.
2. Press [P+S3] button for 1D, until 1 icon changes blinking to solid.

Press [P+S4] button for 2D, until 2 icon changes blinking to solid

How to UNLOCK

1. When 1 or 2 icon is solid,
  2. Press [P+S3] button for 1D, until 1 icon changes solid to blinking.
- Press [P+S4] button for 2D, until 2 icon changes solid to blinking.

**Important Notice :** When Stimulation is locked, **Stimulation will send LOCKED stimulation level** even though you change the Volume Dial.

You can LOCK different stimulation for each dog

# Simple Chart for EZ900 Series Function

## EZ-900

Program Buttons	Function	Description
ON/OFF	Power ON/OFF	Press more than 1 sec to turn ON Press more than 2 sec to turn OFF
	Light	Press to turn on/off RX light (toggling : Blink → Solid → Off)
P	Volume Lock Stimulation Lock Level	Press more than 1 sec to Lock/unlock Stimulation Level
	Mode Buttons	Set Stimulation level "0" S1 mode change P+S1(M→C→V→T) S2 mode change P+S2(C→V→T→M) S3 mode change P+S3(V→T→M→C) S4 mode change P+S4(T→M→C→V)

## EZ-902

Program Buttons	Function	Description
ON/OFF	Power ON/OFF	Press more than 1 sec to turn ON Press more than 2 sec to turn OFF
	Light	1D light ON/OFF + S1 (toggling: blink→solid→off) 2D light ON/OFF + S2 (toggling: blink→solid→off)
P	Volume Lock Stimulation Lock Level	1D Volume lock: P+S3(more than 1 sec) 2D Volume lock: P+S4(more than 2 sec)
	Mode Buttons	Set Stimulation level "0" S1(Dog1) mode change: P+S1(M→C→V→T) S2(Dog2) mode change: P+S2(M→C→V→T) S3(Dog1) mode change: P+S3(V→T→M→C) S4(Dog2) mode change: P+S4(V→T→M→C)

## Important Training Tip

---

E-Collars should be used to reinforce commands your dog already knows. It is not a replacement for basic leash obedience training, but a tool to allow you to better communicate to your dog. For best results, use the least amount of stimulation required to get compliance from your dog. A calm and consistent approach to training will always produce better long term results.

It is highly recommended that aggressive dogs be taken to a professional trainer for evaluation before e-collar use. There are many different e-collar training techniques recommended by a variety of professional trainers. We believe you, the owner of the dog, can best determine the most successful technique for your dog. YouTube has many videos demonstrating these varying techniques by simply searching “educator e-collar training” or “remote dog training techniques with an educator”.

## Additional Contact Points

---

Keep a watchful eye on your dogs skin where the contact points are touching his/her skin for redness or any sign of irritation. This should be done hourly at first and slowly transition to once every four hours after a month of daily wearing of the e-collar. At first notice of redness, immediately switch to one of our hypo allergenic contact points. We offer both nickel free stainless steel and titanium contact points. Dogs with sensitive skin and certain skin sensitive breeds like Pit Bull Terriers and Boxers should be switched early in the process as precautionary move.

Available on [www.ecollar.com](http://www.ecollar.com) or by calling 1-852-326-5527

# Troubleshooting

---

## ? My Receiver / Transmitter is not turning on

- A Make sure the Receiver has been charged. We recommend device fully charge before use.

## ? My Receiver is not responding

- A Check Receiver's indicator light is blinking green and Transmitter LCD to check device power.
- A Check Receiver's indicator light is red when you press any stimulation button.
  - A. If you don't see any red light, check your device using right Multi dog system. For example, if you have one dog, you must small 1 icon only at "Multi Dog system Indicator" on LCD display.
  - B. If still Receiver not respond, Try pairing with Receiver one more time.

## ? I think receiver gives no stimulation at all

- A Remove Contact points from Receiver. Connect Test Light on the Receiver and try any stimulation. If the test light is blinking, receiver is giving stimulation.

## ? Max range of device has been decreased

- A Check Transmitter's battery condition. Working range decrease if battery level is too low.
- A Holding position is important; keep finger away from the antenna. Touching the antenna by finger will greatly reduce the range.

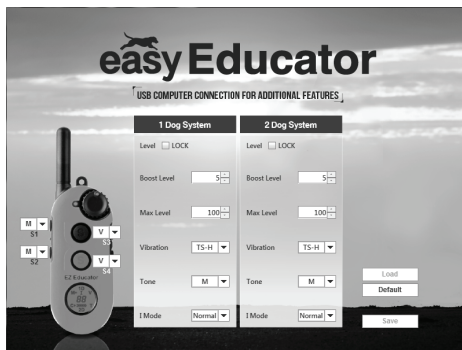
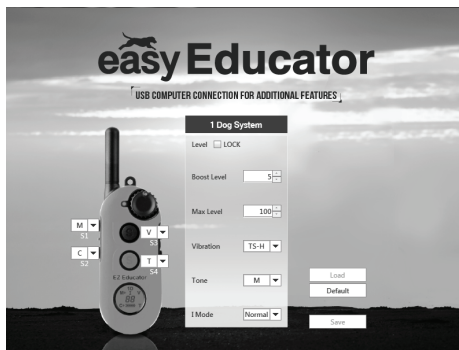
## ? I want to reset the Transmitter as default

- A For EZ900, rotate Volume Dial to 0, press [ON/OFF+S1+S2] simultaneously until you hear beep sound. Press [ON/OFF+S3+S4] for EZ902.

# 22

## USB Interface Tool

Download USB tool from [www.ecollar.com](http://www.ecollar.com) and setup device easily.



1. Download [EZ Educator USB Tool.zip] from [ecollar.com](http://ecollar.com) and extract.
2. Launch EZ-900\_USB\_Tool.exe at folde.  
(Program will guide you to download Java program if you do not have it.)
3. Put USB cable to Transmitter and computer.
4. Select unnumber of dog system you use.
5. Change functions. There are additional options that is only changeable in this program. (ex : Strength of vibration, max stimulation level limit)
6. Click [Save] to save changes.

**\* Descriptions of each function are included in readme.txt at extract**

### ***Important Notice :***

If If you purchased EZ902 or changed to 2dog system from EZ900,  
Please download [EZ902 USB Tool.zip]

# Safety and General Information

---

- The EZ 900 Series Collar complies with all National and International Standards and Guidelines for human exposure to radio frequency electromagnetic energy.
- Nearly all electronic devices are susceptible to electromagnetic interference (EMI) if inadequately shielded or designed without precautions to EMI.
- EZ 900 Series e-collar transmitters manufactured by E-Collar Technologies, Inc. comply with Article 15 of the FCC rules and operate under Part 95 of FCC regulations.
- Operating Frequency Band is 27.095 MHz.

## 1. IMPORTANT NOTICE

To avoid Electromagnetic Interference and/or compatibility conflicts, please turn off your transmitter and collar receiver in any facility where posted notices instruct you to do so. Never use your equipment in close proximity of a Hospital or Health Care Facility or enter the facility without turning off both units.

2. An FCC license is not needed to operate EZ 900 Series e-collar transmitters. However, any change or modification made to the transmitter, including the supplied antenna, without the expressed written approval of E-Collar Technologies, Inc. could void your authority to operate.

## Warranty and Registration

To register your Pro Educator please select one of the following procedures :

(1) Go to the “HELPFUL LINKS & INFORMATION” section at the bottom of [www.ecollar.com](http://www.ecollar.com), click “Product Registration” and complete the form. You will receive a confirmation email.

(2) Call us at (260) 357-0051 and one of our customer service representatives will register your products for you, please have your serial number available.

### GET EXCLUSIVE TRAINING TIPS & PROMOTIONS

Sign up today to receive valuable promotions and training advice.

### HELPFUL LINKS & INFORMATION

About Us      Contact Us      My Account      Warranty>Returns/Cancellation  
Dealer Locator      **Product Registration**      Information Center      FAQ



**Product Registration**

### Two Year Full Warranty:

Your product is covered by our full two year warranty. During the warranty period we will repair and or replace your product for any reason due to workmanship and component failures. Dog chews and misuse are not covered by the warranty and are subject to a repair/replacement fee.

### Important Notice to Consumer/User

In no event shall our company be liable for any direct, indirect, punitive, incidental, special consequential damages, to property or life, whatsoever arising out of or connected with the use or misuse of our products.

## NOTICE

### Possible Metal Allergy

Dogs vary in sensitivity and may develop symptoms of a metal allergy. Which may include irritation, redness, hair loss, sores, etc.

Please rotate collar receiver from side to side daily to check for allergies. If allergies occur, hypoallergenic contact points are available for purchase

at [www.ecollar.com](http://www.ecollar.com) or 260-357-0051

### NOTICE TO PREVENT WATER DAMAGE

If Receiver is exposed to water on a regular basis, tighten screws once or twice a month depending on the frequency of water exposure.

Please make sure screws are snug but not overly tight.

This will help prevent internal water damage.

## Accessories

---

- Micro-Probes Contact Points



- 50% Stimulation Reducer



- Thick-Hair Contact Points



- Short Probe Comfort Adapter



- Small Dog Adapter



- Long Probe Comfort Adapter



- 3/4" Quick Snap Nylon Collar (Black or Red)



- 3/4" Bungee Collar (24" or 30" length)





# Training Notes

---



## **E-Collar Technologies, Inc.**

This product is covered by various patents including but not limited to patents 8757098 and 8833309. Patent is pending on the Instant Stimulation Feature on this device.

2120 Forrest Park Drive  
Garrett, IN 46738-1887

1-260-357-0051 (US & International)  
1-855-326-5527 (US Toll Free)  
1-855-226-5527 (US Toll Free Fax)

**sales@ecollar.com**  
**www.ecollar.com**  
**customerservice@ecollar.com**



*Thank you for Supporting American Workers*

Copyright 2015 E-Collar Technologies, Inc.

All Rights Reserved.