

## Transmitter Battery Replacement Instructions

1. Using our skin tool or a number 4 screwdriver.

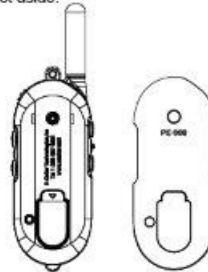


Note : Video is available on our youtube channel.

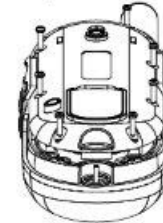
2. Insert tool into the slot and twist counterclockwise until the back skin snaps loose, do not pry.



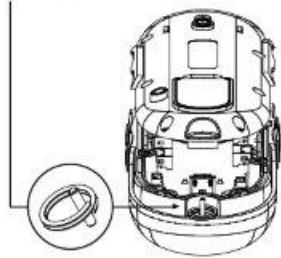
3. Carefully remove the back skin and set aside.



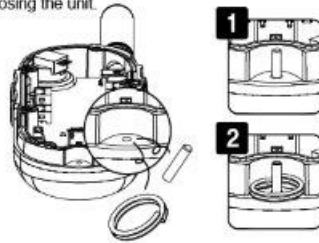
4. Remove all 7 screws using a Torx 6 screwdriver. Turn over and carefully separate the back plate from the main body.



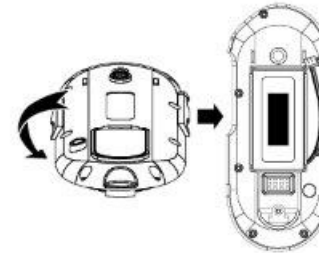
5. The small post and the ring should stay in place during installation.



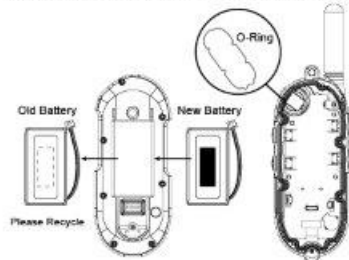
6. Should the post and the ring pop out set them aside while replacing the battery. Remember to reinsert them as order below before closing the unit.



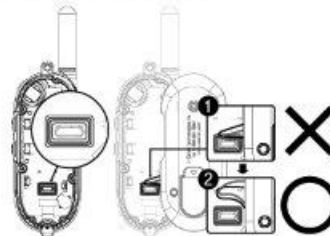
7. Remove old battery by disconnecting the miniature connector.



8. Remove the cushion and attach it to the new battery and reconnect the connector. Make sure the O-ring is positioned correctly before reinstalling the screws.



9. There is a green rectangular silicon Protector on the USB port inside the main body. Be careful to keep the wire away from the silicon as shown in figure 2 and do not pinch the wire as seen in the figure 1 or a broken wire may occur.



10. After all the screws are snug snap the skins back into place.



For Assistance Call  
1-260-357-0051